

## SOUND ABSORBING FAN

### SAF-3, SAF-5, SAF-7, SAF-9

SAF is a combination of a Plymovent TEV fan in a sound absorbing case. The TEV is a central extraction fan that is equipped with a lightweight aluminium impeller, making it suited to exhaust gases, volatile fumes and dust. The fan is mounted in a sound absorbing case with inspection hatch.

Matched inlet and outlet areas, together with optimized impellers, ensure even airflow, high capacity and low noise level.

SAF is designed with materials that can withstand most weather types, making it highly suitable for both indoor and outdoor use.



### APPLICATIONS

SAF is intended to be used for the following applications:

- MIG-MAG/GMAW welding
- TIG welding
- FCAW welding
- stick/MMAW welding
- exhaust extraction
- stainless steel welding
- grinding
- polishing
- finishing



### SPECIFICATIONS

#### Physical dimensions and properties

|           |  |
|-----------|--|
| Material: |  |
| • fan     | • powder coated galvanized sheet metal |
| • housing | • powder coated galvanized sheet metal |
| Colour    |  |
| • housing | • grey (RAL 7011)                      |
| • fan     | • grey (RAL 7011)                      |
| • motor   | • black (RAL 9005)                     |

#### Performance

|  |                            |
|--|----------------------------|
| Speed  | 2800 rpm                   |
| Noise level  | refer to sound level chart |
| Noise reduction of sound absorbing case <sup>1</sup> | approx. 10 dB(A)           |

#### Electrical data

|                           |            |
|---------------------------|------------|
| Efficiency level          | IE3        |
| Insulation class          | F with PTC |
| Protection class          |            |
| • motor                   | • IP 33    |
| • housing                 | • IP 55    |
| Max. start/stops per hour | 30         |

#### Ambient conditions

|                          |                              |
|--------------------------|------------------------------|
| Process temperature:     |                              |
| • min.                   | • 5°C (41°F)                 |
| • nom.                   | • 20°C (68°F)                |
| • max.                   | • 80°C (176°F)               |
| Max. relative humidity   | 90%                          |
| Suitable for outdoor use | yes                          |
| Storage conditions       | • 5-80°C (41-176°F)          |
|                          | • relative humidity max. 80% |

#### Product combinations

|                                    |             |
|------------------------------------|-------------|
| Vehicle exhaust extraction systems | all systems |
| Filter units                       | all systems |
| Fume extraction systems            | all systems |
| Control equipment                  | all systems |

#### Order information

|                |   |
|----------------|---|
| Article no.    |   |
| Number/package | 1 |

#### Logistics data

|                                   |                  |
|-----------------------------------|------------------|
| Gross weight (incl. pallet)       | refer to table 2 |
| Packing dimensions (incl. pallet) | refer to table 2 |
| Max. number/pallet                | 1                |
| Harmonized Tariff Code            | 8414.5940.90     |

See table 1: for dimensions

See table 2: for remaining specifications

See page 3: for sound levels

### APPROVALS/CERTIFICATES

|  |   |
|--|---|
|  | Compliance with CE & UKCA directives                |
|  | Directive 2011/65/EC (RoHS) valid as of 8 June 2011 |
|  | Certified motor                                     |

<sup>1</sup> tested with duct silencer, see price list for model selection

## DIMENSIONS

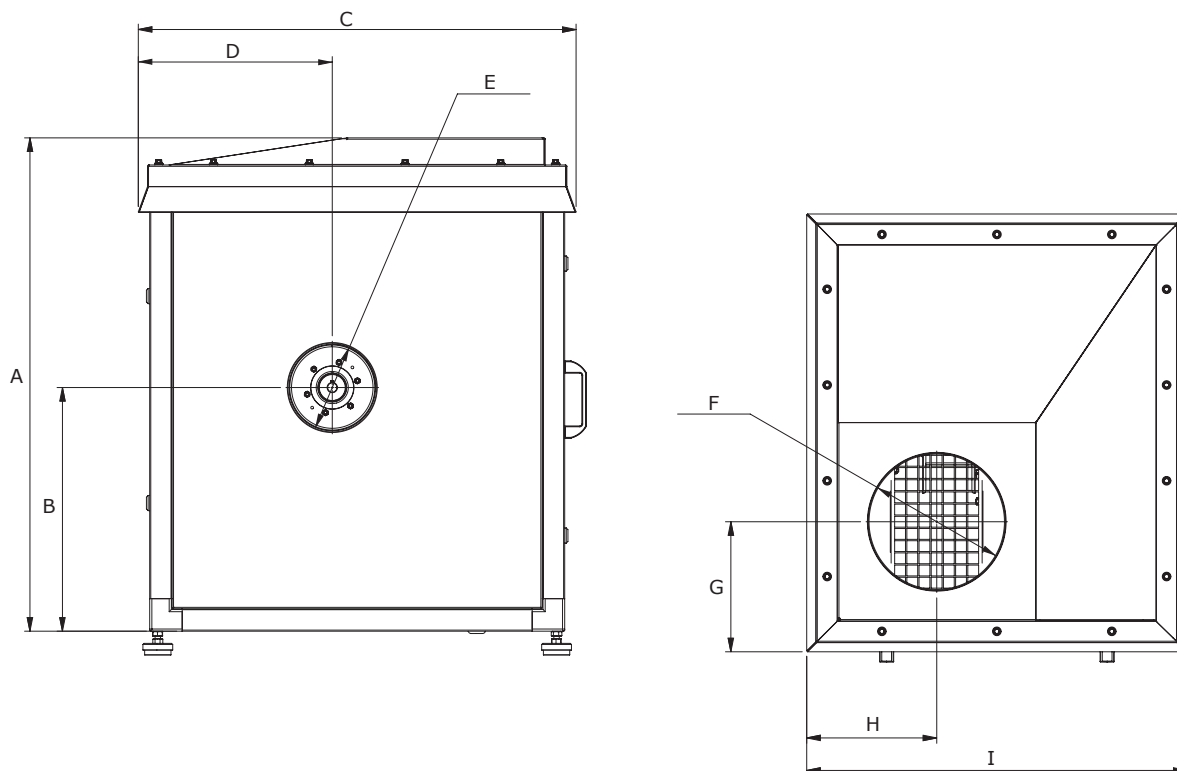


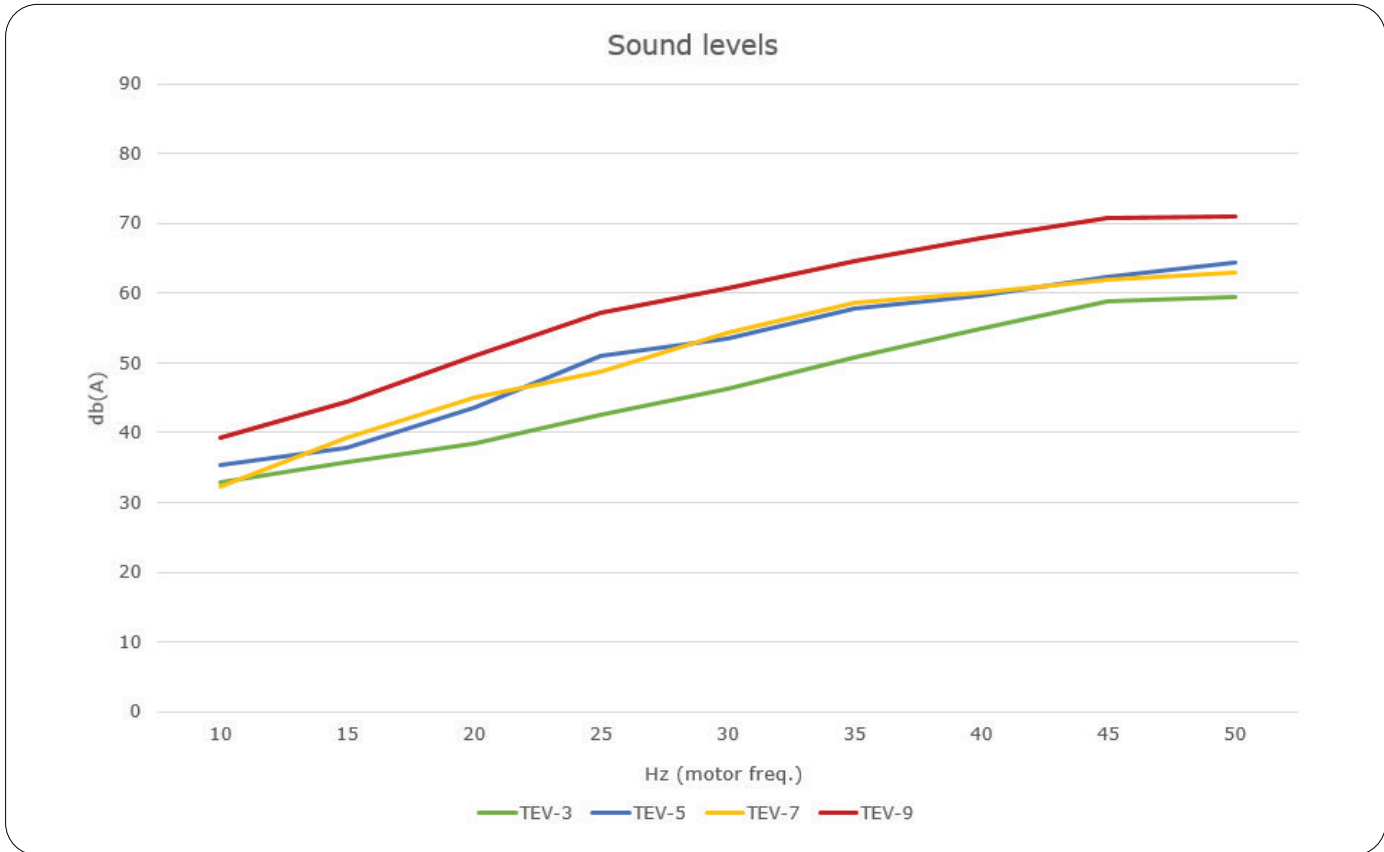
Table 1: Dimensions

|   | SAF-3 |       | SAF-5 |        | SAF-7 |      | SAF-9 |        |
|---|-------|-------|-------|--------|-------|------|-------|--------|
|   | mm    | inch  | mm    | inch   | mm    | inch | mm    | inch   |
| A | 911   | 35.9  | 1092  | 43     | 1277  | 50.3 | 1389  | 54.7   |
| B | 450   | 17.7  | 539   | 23.3   | 698   | 27.5 | 716   | 28.2   |
| C | 808   | 31.8  | 988   | 38.9   | 1192  | 46.9 | 1338  | 52.7   |
| D | 358   | 14.1  | 401   | 15.8   | 493   | 19.4 | 538   | 21.2   |
| E | Ø 160 | Ø 6.3 | Ø 200 | Ø 8    | Ø 250 | Ø 10 | Ø 315 | Ø 12.4 |
| F | Ø 250 | Ø 10  | Ø 315 | Ø 12.4 | Ø 400 | Ø 16 | Ø 500 | Ø 20   |
| G | 240   | 9.5   | 312.5 | 12.3   | 362.5 | 14.3 | 417.5 | 16.4   |
| H | 240   | 9.5   | 312.5 | 12.3   | 362.5 | 14.3 | 417.5 | 16.4   |
| I | 702   | 27.6  | 854   | 33.6   | 961   | 37.8 | 1071  | 42.2   |

Table 2: Remaining specifications

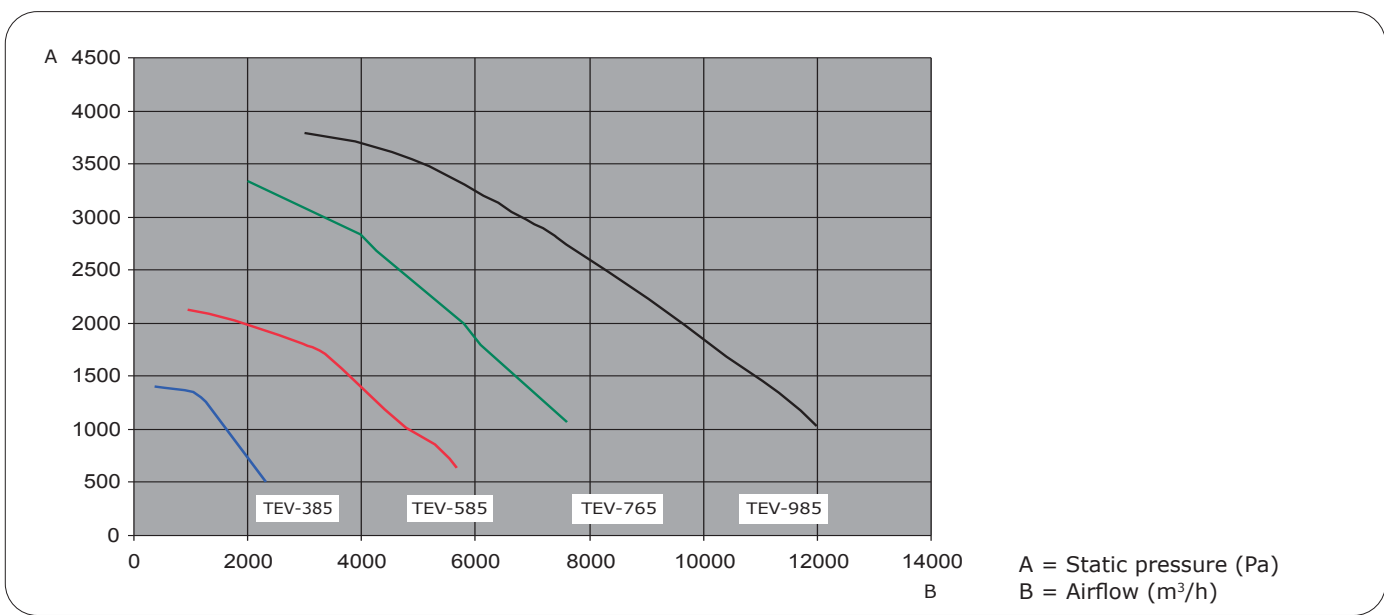
| Features                                      | SAF-3   | SAF-5   | SAF-7   | SAF-9   |
|---|---|---|---|---|
| Article number                                | 0000302729                                    | 0000302730  | 0000302731                                    | 0000302732                                      |
| ◆ <b>Weight</b>                               |   |   |   |   |
| Net weight                                    | 111 kg (245 lbs)                              | 165 kg (364 lbs)                                  | 239 kg (527 lbs)                              | 311 kg (686 lbs)                                |
| ◆ <b>Electrical data</b>                      |   |   |   |   |
| Connection voltage                            | 230-400V/3~/50Hz                              | 230-400V/3~/50Hz                                  | 230-400V/3~/50Hz                              | 400-690V/3~/50Hz                                |
| Power   | 0,75 kW (1 HP)                                | 2,2 kW (3 HP)                                     | 4 kW (5 HP)                                   | 7,5 kW (10 HP)                                  |
| Nominal current<br>• 230V<br>• 400V<br>• 690V | • 3,02 A<br>• 1,7 A<br>• -                    | • 7,98 A<br>• 4,61 A<br>• -                       | • 13,32 A<br>• 7,69 A<br>• -                  | • -<br>• 14,1 A<br>• 8,2 A                      |
| ◆ <b>Shipping data</b>                        |   |   |   |   |
| Gross weight                                  | 126 kg (278 lbs)                              | 180 kg (397 lbs)                                  | 259 kg (571 lbs)                              | 331 kg (730 lbs)                                |
| Packing dimensions<br>(W x L x H)             | 750 x 850 x 1140 mm<br>(29.5 x 33.5 x 45 in.) | 1000 x 1200 x 1340 mm<br>(39.4 x 47.2 x 52.8 in.) | 1300 x 1600 x 1600 mm<br>(51.2 x 63 x 63 in.) | 1300 x 1600 x 1670 mm<br>(51.2 x 63 x 65.7 in.) |

SOUND LEVELS²



² Test data based on SAF + SAS silencers (see price list) Plymovent highly recommends the use of duct silencers with the sound absorbing fan

FAN CURVES



Application restrictions

Do **not** use the product for the following applications or in the following circumstances: polishing applications in combination with grinding, welding or any other application that generate sparks (fibres from polishing or abrasive flap disks are highly flammable and pose a high risk of filter fires when exposed to sparks) | aluminium laser cutting | oil mist | heavy oil mist in welding fume | arc-air gouging | extraction of aggressive fumes and gases (e.g. from acids, from alkaline, from soldering paste containing lithium) | extraction of hot gases (more than 70°C/158°F continuously) | grinding aluminum and magnesium | flame spraying | extraction of cement, saw dust, wood dust etc. | sucking cigarettes, cigars, oiled tissues and other burning particles, objects and acids | explosive environments or explosive substances/gases



|                  |                     |
|------------------|---------------------|
| Product type     | Sound Absorbing Fan |
| Article no.      | refer to table 2    |
| Product category | fans                |
| Version          | 24OCT2023/0         |

Always check the latest version on [www.plymovent.com](http://www.plymovent.com)