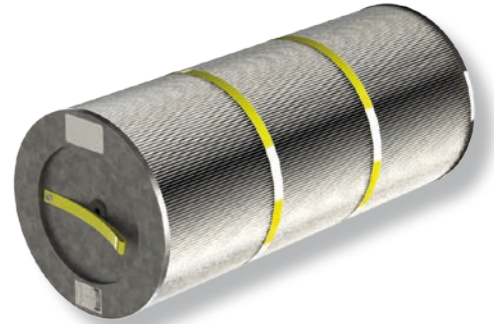


CART-D | C | E | PTFE | MB

FILTER CARTRIDGE

Pleated filter cartridge to be used in central filter systems MultiDust Bank (MDB).

Dust collection at the outside of the filter cartridge. The filter is cleaned by compressed airshots from the inside, which makes it a self-cleaning filter.



SPECIFICATIONS

	GENERAL	CART-D			CART-C	CART-E	CART-PTFE		CART-MB
		Premium Plus	Premium	Economy			PTFE/10	PTFE/15	
Physical dimensions and properties									
Material of frame	galvanised steel								
Filter material	-	BiCo spunbond polyester	spunbond polyester	cellulose 78% cellulose + 22% resin	BiCo spunbond polyester, with aluminium coating (antistatic)	BiCo spunbond polyester + PTFE impregnation	BiCo spunbond polyester + PTFE membrane	BiCo spunbond polyester + PTFE membrane	cellulose with polypropylene microfiber overlay, electrostatically charged
Flame retardancy	-			phenol with flame retardant impregnation F1					by vinyl chloride resin
Dimensions:									
• height	763 mm (30.0 in.)								
• diameter (external)	Ø 325 mm (12.8 in.)								
• diameter (internal)	Ø 216 mm (8.5 in.)								
Colour of filter material	-	white	white	yellow	grey	white	white	white	white
Weight	-	7 kg (15.4 lbs.)	7 kg (15.4 lbs.)	5 kg (11 lbs.)	6,5 kg (14.3 lbs.)	6 kg (13.2 lbs.)	5,5 kg (12.1 lbs.)	6,7 kg (14.8 lbs.)	4,5 kg (9.9 lbs.)
Shape	cylinder								
Height of pleats	46 mm (1.8 in.)								
Filter surface area	-	15 m ² (161 ft ²)	15 m ² (161 ft ²)	15 m ² (161 ft ²)	15 m ² (161 ft ²)	15 m ² (161 ft ²)	10 m ² (108 ft ²)	15 m ² (161 ft ²)	10 m ² (108 ft ²)
Surface weight of filter material	-	260 g/m ² (373 grains/ft ²)	260 g/m ² (373 grains/ft ²)	130 g/m ² (186 grains/ft ²)	170 g/m ² (244 grains/ft ²)	270 g/m ² (387 grains/ft ²)	240 g/m ² (344 grains/ft ²)	240 g/m ² (344 grains/ft ²)	150 g/m ² (215 grains/ft ²)
Washable (e.g. by using Plymovent EFC detergent)	-	<input checked="" type="checkbox"/>	<input checked="" type="checkbox"/>	<input type="checkbox"/>	<input type="checkbox"/>	<input checked="" type="checkbox"/>	<input type="checkbox"/>	<input type="checkbox"/>	<input type="checkbox"/>

	GENERAL	CART-D			CART-C	CART-E	CART-PTFE		CART-MB
		Premium Plus	Premium	Economy			PTFE/10	PTFE/15	
Filter efficiency									
Dust class	-	M ¹	M ¹	M ¹	M ¹	M ¹	M ¹	M ¹	
Filter class:									
• non precoated	-	MERV 11 ²	MERV 11 ²	MERV 11 ²	MERV 11 ²	MERV 11 ²	MERV 16 ²	MERV 16 ²	MERV 16 ²
• with PRECO-N	-	MERV 14 ²	MERV 14 ²	MERV 14 ²	n.a.	MERV 14 ²	n.a.	n.a.	n.a.
Ambient conditions									
Max. process temperature	90°C (194°F)								
Where used									
Central filter system	MultiDust Bank (MDB)								
Option									
Precoat material (refer to Filter efficiency)	-	PRECO-N	PRECO-N	PRECO-N	n.a.	PRECO-N	n.a.	n.a.	n.a.
Expected lifespan									
Relative comparison									
long									
medium									
short									
Combination with SHIELD fire safety solutions									
Fire prevention (OilShield)	-	<input checked="" type="checkbox"/>	<input checked="" type="checkbox"/>	<input type="checkbox"/>	<input type="checkbox"/>	<input checked="" type="checkbox"/>	<input type="checkbox"/>	<input type="checkbox"/>	<input type="checkbox"/>
Fire suppression (FlameShield)		<input checked="" type="checkbox"/>	<input checked="" type="checkbox"/>	<input type="checkbox"/>	<input type="checkbox"/>	<input checked="" type="checkbox"/>	<input checked="" type="checkbox"/>	<input checked="" type="checkbox"/>	<input type="checkbox"/>
Application area									
Special requirements	-	high dust load	medium to high dust load	low to medium dust load	antistatic	oily or sticky fumes	IFA W3	IFA W3	special purposes ³
Intensity of use	-	24/7	16/7	8/5	24/7	24/7	24/7	24/7	8/5
Scope of supply									
Package contains	Filter cartridge - Disposable gloves - Facemask								
Order information									
Article no.	-	0000100356	0000110003	0000110004	0000100353	0000100354	0000100297	0000104642	0000102315
Number/package	1								
Shipping data									
Gross weight	-	7,5 kg (16.5 lbs.)	7,5 kg (16.5 lbs.)	5,5 kg (12.1 lbs.)	7 kg (15.4 lbs.)	6,5 kg (14.3 lbs.)	6 kg (13.2 lbs.)	7,2 kg (15.9 lbs.)	5 kg (11 lbs.)
Packing dimensions	335 x 335 x 780 mm (13.2 x 13.2 x 30.7 in.)								
Harmonized Tariff Code	8421.39.2090								
Country of origin	EU								

¹ according to DIN EN 60335-2-69

² according to ASHRAE 52.2

³ special purposes where high efficiency is required, e.g. when welding stainless steel

Product type **CART-D | C | E | PTFE | MB**
Article no. *refer to order information*
Product category Filters
Version 160216/H

Always check the latest version on www.plymovent.com