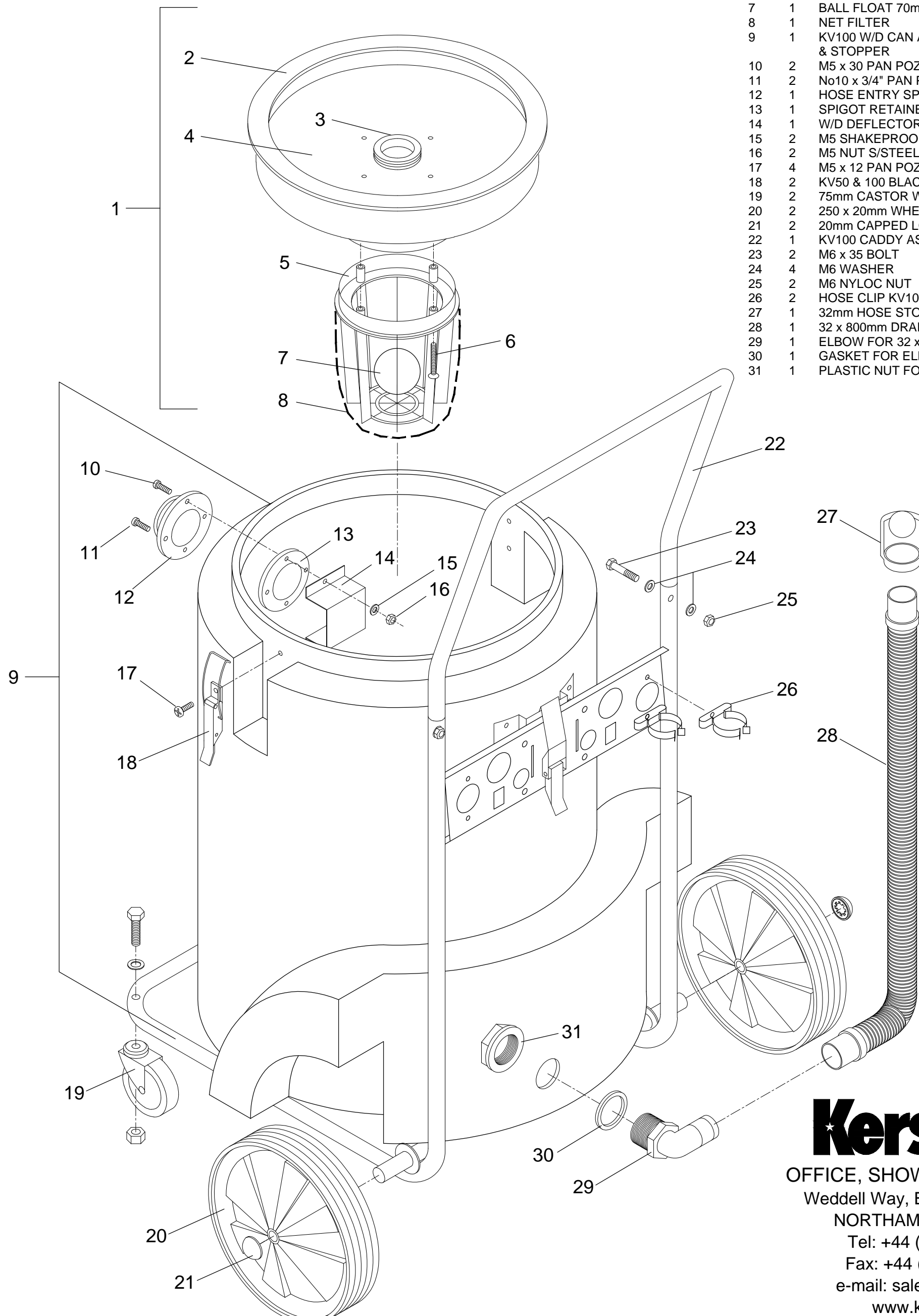


KV100/1 W/D & KV100/2 W/D CAN ASSEMBLY

ITEM No	QTY	DESCRIPTION
1	1	14" FLOAT ASSEMBLY
2	1	14" SEALING RING
3	1	SEAL FOR 70mm BALL FLOAT
4	1	14" FLOAT PLATE
5	1	FLOAT CAGE
6	4	No8 x 1-3/4" PAN POZI SELF TAP SCREW S/STEEL
7	1	BALL FLOAT 70mm
8	1	NET FILTER
9	1	KV100 W/D CAN ASSEMBLY INC DRAIN HOSE & STOPPER
10	2	M5 x 30 PAN POZI SCREW S/STEEL
11	2	No10 x 3/4" PAN POZI PLASTITE SCREW
12	1	HOSE ENTRY SPIGOT OUTER
13	1	SPIGOT RETAINER FOR METAL CAN
14	1	W/D DEFLECTOR S/STEEL
15	2	M5 SHAKEPROOF WASHER S/STEEL
16	2	M5 NUT S/STEEL
17	4	M5 x 12 PAN POZI SCREW S/STEEL
18	2	KV50 & 100 BLACK CLIP
19	2	75mm CASTOR WITH NUT BOLT & WASHER
20	2	250 x 20mm WHEEL BLACK/BLUE
21	2	20mm CAPPED LOCK WASHER
22	1	KV100 CADDY ASSEMBLY
23	2	M6 x 35 BOLT
24	4	M6 WASHER
25	2	M6 NYLOC NUT
26	2	HOSE CLIP KV100
27	1	32mm HOSE STOPPER
28	1	32 x 800mm DRAIN HOSE
29	1	ELBOW FOR 32 x 800mm DRAIN HOSE
30	1	GASKET FOR ELBOW
31	1	PLASTIC NUT FOR DRAIN HOSE ELBOW



Kerstar (UK) Ltd
 OFFICE, SHOWROOMS & WORKS
 Weddell Way, Brackmills Ind. Estate
 NORTHAMPTON NN4 7HS
 Tel: +44 (0)1604 760455
 Fax: +44 (0)1604 701022
 e-mail: sales@kerstar.co.uk
 www.kerstar.co.uk