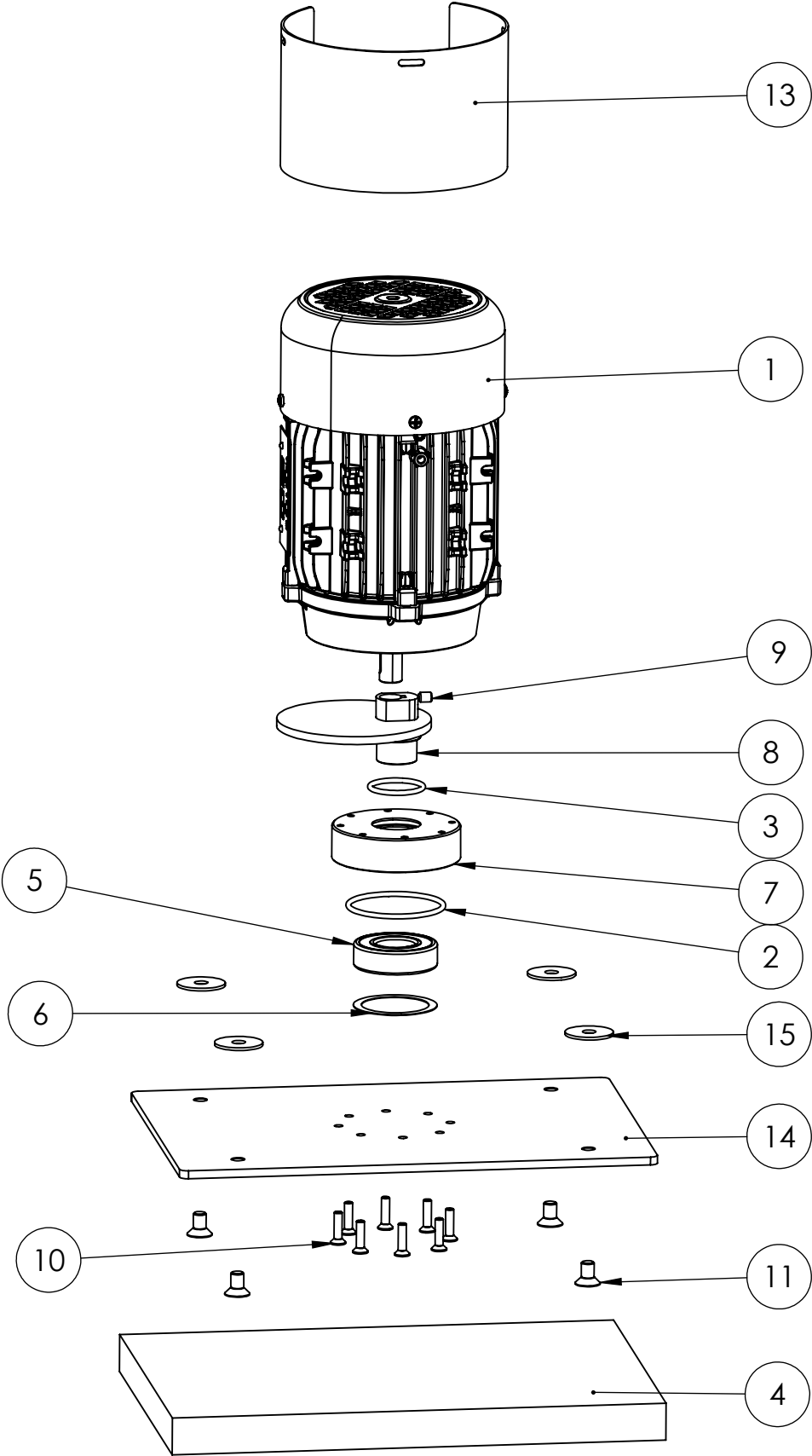


| ITEM NO. | PART NUMBER | DESCRIPTION | Material | EXC. NO. | QTY. |
|----------|----------------------|------------------------------------|----------|----------|------|
| 1 | 1695 | EXCENTRIEK+MOTOR 3020+ 230VAC | ASS | X | 1 |
| 2 | 0958 | ACHTERPLAAT FRAME | AISI 304 | X10768 | 1 |
| 3 | 1698 | MOTORPLAAT 3020+ B14 MET STOOTRAND | RVS 304 | X11328 | 1 |
| 4 | 1697 | ZIJPLAAT LINKS 3020+ | AISI 304 | X11326 | 1 |
| 5 | 1696 | ZIJPLAAT RECHTS 3020+ | AISI 304 | X11327 | 1 |
| 6 | 1523 | MASSAPLAAT GR 3020+ | FE 360 | 705119 | 1 |
| 7 | 1524 | MASSAPLAAT KL 3020+ | FE360 | 705118 | 8 |
| 8 | 1699 | HOEKPROFIEL 3020 3050 | AISI 304 | X11325 | 2 |
| 9 | 1701 | RING Ø24X12.2X1 | AISI 304 | X11323 | 2 |
| 10 | as tbv verstelling | AS HOOGTEVERSTELLING 5535 43 | RVS 303 | 707012 | 1 |
| 11 | prop tbv veer | VEERPROP BOVEN | HMPE | 607002 | 1 |
| 12 | 1253 | TUSSENBUS FRAME 3020+ | AISI 304 | X11140 | 2 |
| 13 | 0271-pol | TAPEIND Ø12 M8 L=70 | RVS 304 | 800086 | 2 |
| 14 | 1700 | BUS MESSING Ø12X8.5 L=8.0MM | Brass | X11359 | 2 |
| 15 | DIN 125A-M06 | SLUITRING M6 | A2 | 800144 | 2 |
| 16 | DIN 9021-M08 | CARROSSERIERING M8 | A2 | 800179 | 2 |
| 17 | DIN 125A-M08 | SLUITRING M8 | A2 | 800023 | 14 |
| 18 | DIN 125A-M12 PA | RING M12 PA | PA | 800120 | 6 |
| 19 | DIN 125A-M12 | SLUITRING M12 | A2 | 800019 | 2 |
| 20 | ISO 7380-M8X22 | IMBUSSCHROEF BK M8X22 | A2 | X11360 | 2 |
| 21 | DIN 933-M12X60 | BOUT ZK M12X60 | A2 | X10917 | 2 |
| 22 | DIN 934-M8 | MOER M8 | A2 | 800049 | 12 |
| 23 | DIN 985-M5 | BORGMOER M5 | A2 | 800036 | 1 |
| 24 | DIN 985-M8 | BORGMOER M8 | A2 | 800022 | 6 |
| 25 | DIN 985-M6 | BORGMOER M6 | A2 | 800063 | 2 |
| 26 | DIN 985-M12 | BORGMOER M12 | A2 | 800018 | 2 |
| 27 | DIN 6921-M06X12 | BOUT MET FLENS ZK M06X12 | A2 | 800190 | 4 |
| 28 | ISO 7380-M4X06 | IMBUSSCHROEF BK M4X06 | A2 | 800093 | 6 |
| 29 | ISO 7380-M5x08 | IMBUSSCHROEF BK M5X8 | A2 | 800134 | 1 |
| 30 | ISO 7380-M6x15 | IMBUSSCHROEF BK M6X16 | A2 | 800198 | 2 |
| 31 | ISO 7380-M8X55 | IMBUSSCHROEF BK M8X55 | A2 | 800084 | 2 |
| 32 | 0938 | BUMPER 3020+ | NBR | X10911 | 1 |
| 33 | 1172 | RUBBERPLAAT 3020+ 230VAC | Rubber | 650033 | 2 |
| 34 | 0138-pol | TAILLE DEMPER 30/19.5-41 BF 43sh | ART. | 650006 | 4 |
| 35 | 0157-pol | TRILDEMPER Ø30X45 M8 | ART. | 650005 | 4 |
| 36 | 0774 | WIEL Ø160X42 (RES) | RES | X10919 | 2 |
| 37 | 0070 | WIELDOP | RES | 610006 | 2 |
| 38 | 0179-pol | HANDVAT Ø22 | ART. | 608004 | 2 |
| 39 | 0312-pol | VINIFLEX N12 | ART. | 210025 | 1 |
| 40 | 1213 | VELCRO KGS | KLIT | 205404.3 | 1 |
| 41 | 1254 | DOORVOERTULE HV 1402 | ART/PVC | 608009 | 1 |
| 42 | 1574 | STECKER + SNOER + PAKBUS | ART | 530034 | 1 |
| 43 | schakelaar aan uit | SCHAKELAAR AAN/UIT 230VAC 16A | ART. | 520002 | 1 |
| 44 | sterknop M8 | STERKNOP Ø40 M8 | ART. | 608011 | 2 |
| 45 | veer tbv verstelling | VEER TBV VERSTELLING 5535 43 | RVS | 801001 | 1 |
| 46 | 1375 | L DUWBOOM | ASS. | X | 1 |
| 47 | 1576 | STICKER LOGO KLEIN | STICKER | 901003 | 1 |
| 48 | 1577 | TYPEPLAAT 30-20 + E | STICKER | 901013 | 1 |



| ITEM NO. | EXC. NO. | PART NUMBER | DESCRIPTION | Description ENG | Default/ QTY. |
|----------|----------|-----------------|-----------------------------|------------------------------|------------------|
| 1 | X11415 | 1694 | MOTOR 0.37kW 230VAC | MOTOR 0.37KW 230VAC | 1 |
| 2 | 800054 | 0145-pol | O-RING NBR ZW 36624 56X3 | O-RING Ø56X3 | 1 |
| 3 | 800056 | 0187-pol | O-RING NBR ZW 36624 30X3 | O-RING Ø30X3 | 1 |
| 4 | 205338 | 0229-pol | EXCENTR RED PAD (3020) | EXCENTR RED PAD (3020) | 1 |
| 5 | X11319 | DIN 625 - 6205 | KOGELLAGER | GROOVE BALL BEARING | 1 |
| 6 | 801515 | GLF 6205 K2 | GOLFRING 52X42X0.5 | WAVE SPRING WASHER Ø52 | 1 |
| 7 | 707018 | 0150-pol | LAGERHUIS KLEINE MACHINES | BEARING HOUSE SMALL | 1 |
| 8 | ASS. | 1061 | EXCENTRIEK 3020+ | WELD ASS. ECCENTRIC 3020+ | 1 |
| 9 | 800104 | DIN 916-M6X8 | STELSCHROEF KRATEREIND M6X8 | SOCKET SET SCREW M6X8 | 1 |
| 10 | 800103 | DIN 7991-M05X20 | IMBUSSCHROEF VK M5X20 | COUNTERSUNK HEAD SCREW M5X20 | 8 |
| 11 | 800096 | DIN 7991-M08X14 | IMBUSSCHROEF VK M8X14 | COUNTERSUNK HEAD SCREW M8X14 | 4 |
| 12 | 705038 | 0153-pol | RING Ø24X14X3 | WASHER Ø24X14X3 | 1 |
| 13 | X | 1974 | MOTORKOELKAP 375W (3020+) | MOTOR COOL CAP | 1 |
| 14 | 705032 | 0185-pol | VOETPLAAT 3020 | SCRUB PLATE 3020 | 1 |
| 15 | 800201 | DIN 9021-M08X30 | CARROSSERIERING M8X30 | FENDER WASHER M8X30 | 4 |