

ARA 85|BM 140

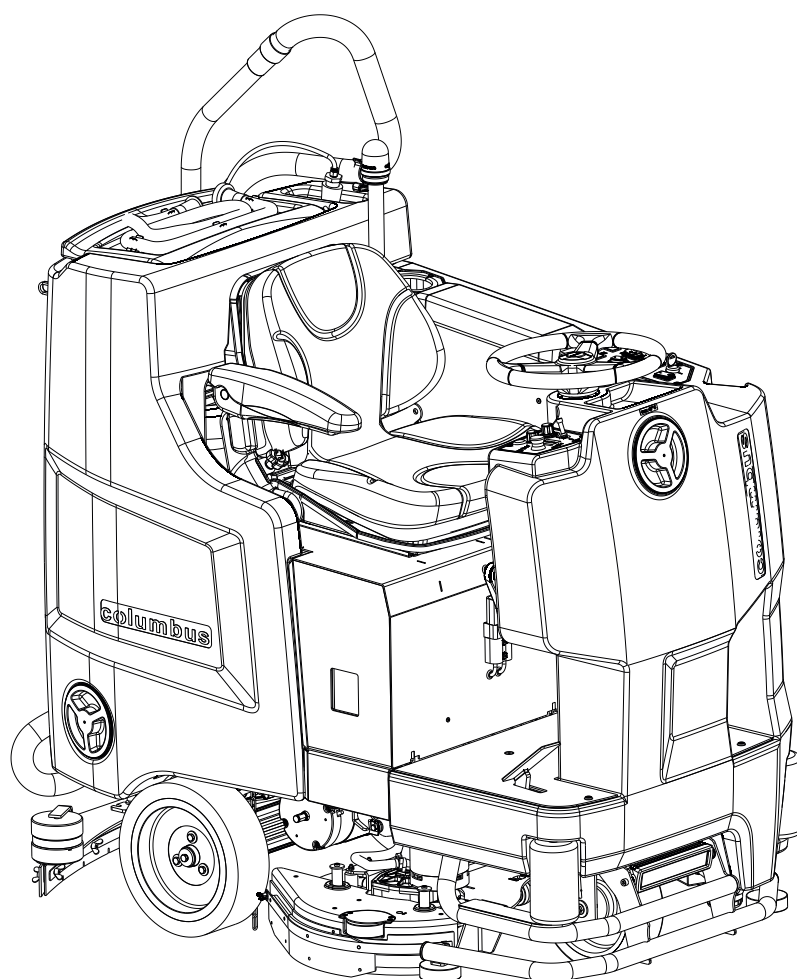
**Ersatzteilliste
Reinigungsautomat**

**Spare parts list
Scrubber dryer**

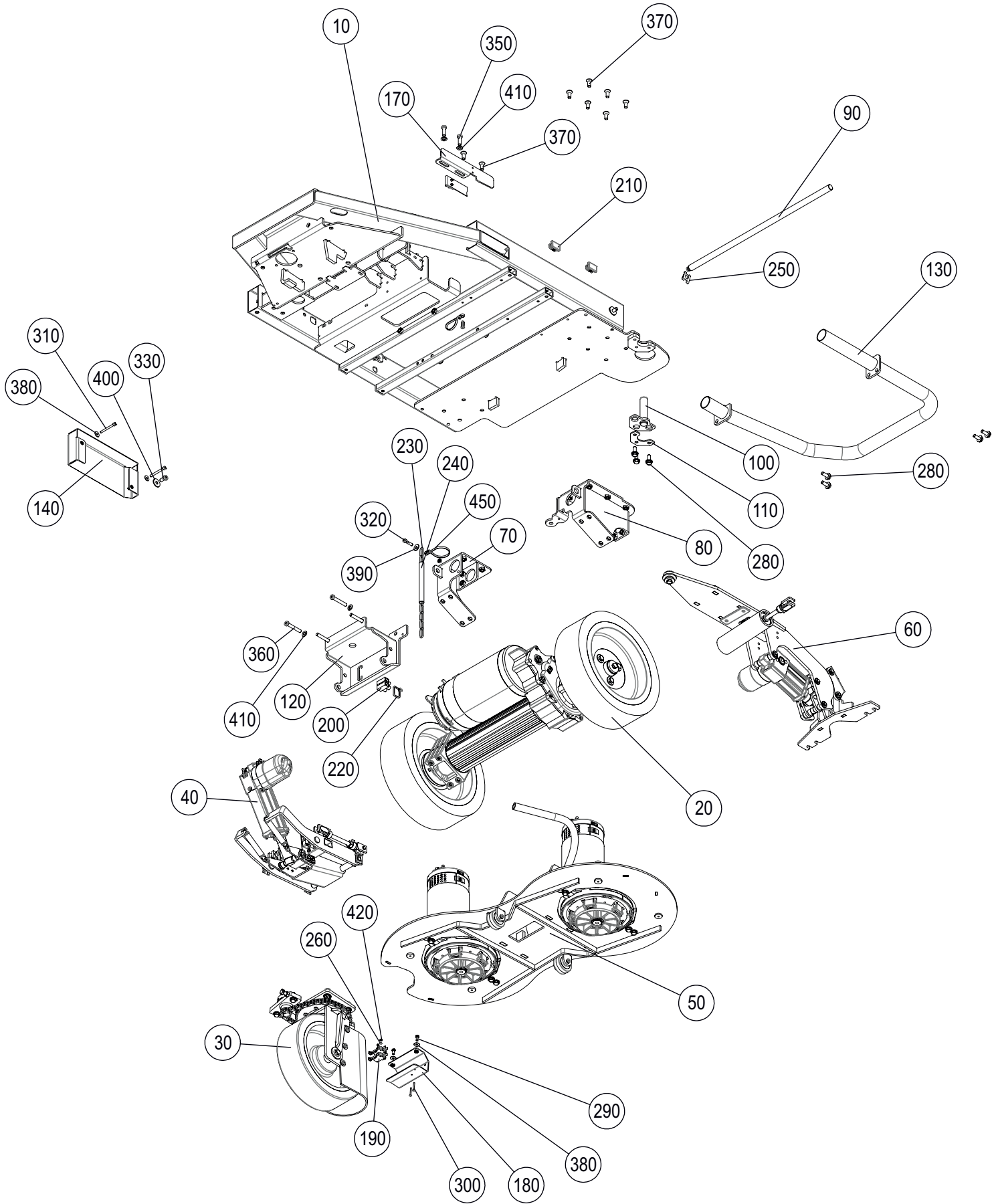
**Catalogue des pièces de rechange
Auto-laveuse**

**Elenco pezzi di ricambio
Lavasciuga pavimenti**

**Libro de recambios
Fregadora Automática**



Chassis



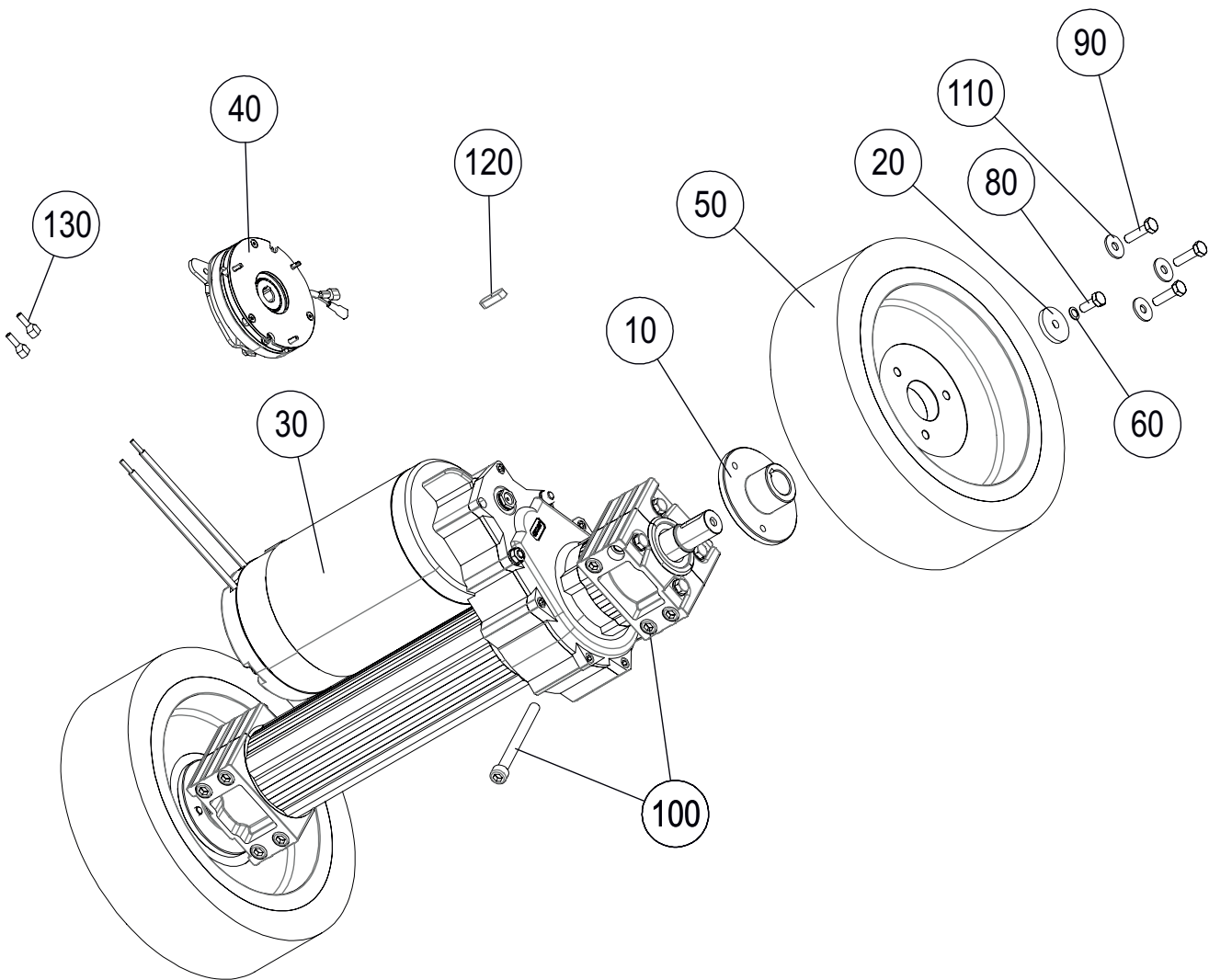
Chassis kpl. 21694230

| Pos. | Art.Nr. | Stück | Bezeichnung | Description | Designation | Descrizione |
|------|----------|-------|---------------------------------------|------------------------------------|---|--------------------------------------|
| 10 | 21690400 | 1 | Chassis | chassis | châssis | telaio |
| 20 | 21707630 | 1 | Fahrtrieb | traction drive | moteur de traction | motore trazione |
| | 21707631 | 1 | Fahrtrieb für Leistungssteigerungskit | traction drive for performance kit | moteur de traction pour kit performance | motore trazione para kit prestazioni |
| 30 | 21727930 | 1 | Vorderrad | front wheel | roue a nt | ruota anteriore |
| 40 | 21728130 | 1 | Hebemechanik | lifting | le ge | solle mento |
| 50 | 21708930 | 1 | Bürsteinheit | brush unit | unité de brossage | unità spazzola |
| 60 | 21708330 | 1 | Düsenanhebung | Nozzle lift | relèvement de la buse | solle mento dell'ugello |
| 70 | 21690600 | 1 | Radhalter rechts | left wheel holder | support de roue d. | supporto ruota d. |
| 80 | 21690700 | 1 | Radhalter links | right wheel holder | support de roue g. | supporto ruota s. |
| 90 | 21689900 | 1 | Auflagestange | support rod | barre de support | barra di supporto |
| 100 | 21691100 | 1 | Scharnier | hinge | charnière | cerniera |
| 110 | 21691000 | 1 | Einstellblech | adjustment plate | plaque de réglage | piastra regolazione |
| 120 | 21691500 | 1 | Blechkonsole | sheet metal | console | console |
| 130 | 21688600 | 1 | Rammschutz | ram protection | pare-chocs arrière | paraurti posteriore |
| 140 | 21689500 | 1 | Abdeckblech | cover | couverture | coperchio |
| 150 | 21690000 | 1 | Verriegelungsblech | locking plate | plaque de verrouillage | piastra di bloccaggio |
| 160 | 21630700 | 2 | Scharnier | hinge | charnière | cerniera |
| 170 | 21746600 | 1 | Niederhalter | holder | Titulaire | titolare |
| 180 | 21165801 | 1 | Halter Microschalter | holder microswitch | support micro-interrupteur | supporto microinterruttore |
| 190 | 20958800 | 2 | Microschalter | microswitch | microinterrupteur | microinterruttore |
| 200 | 20294504 | 1 | Klemmleiste 2-polig | clamping strip | borne de jonction | presa |
| 210 | 21695900 | 4 | Stopfen | stopper | bouchon | tappo |
| 220 | 20161300 | 1 | Kabelbinder TY 242 M | cable strip | attache rapide | strip cavo |
| 230 | 21728600 | 1 | Kette 3x26 V2A | chain | châine | cerniera |
| 240 | 50114500 | 0,13m | Isolierschlauch 10x0,7 | insulating hose | tube isolant | tubo isolante |
| 250 | 20373800 | 1 | SL-Sicherung 12 MBO 08 | safety piece | collier d'épaulement | piece di sicurezza |
| 260 | 20165400 | 2 | Sicherungsscheibe SMZ 3 | washer | rondelle | rondella |
| 270 | 20682200 | 2 | Verbusschraube M 8x16 | hexagon screw | vis a tete hex. | vite |
| 280 | 20195300 | 7 | Verbusschraube M 8x20 | hexagon screw | vis a tete hex. | vite |
| 290 | 20119500 | 2 | 6-Kantschraube M5x12 | hexagon screw | vis a tete hex. | vite esagonale |
| 300 | 20114000 | 2 | Linsenschraube M3x25 | screw M3x25 | vis M3x25 | vite M3x25 |
| 310 | 20041700 | 2 | Zylinderschraube M5x50 | cylindrical head screw | vis cylindrique | vite |
| 320 | 20010400 | 1 | Zylinderschraube M6x25 | cylindrical head screw | vis cylindrique | vite |
| 330 | 20152000 | 1 | Zylinderschraube M8x16 | cylindrical head screw | vis cylindrique | vite |
| 340 | 20076700 | 3 | Zylinderschraube M8x20 | cylindrical head screw | vis cylindrique | vite |
| 350 | 20029200 | 4 | Zylinderschraube M8x25 | cylindrical head screw | vis cylindrique | vite |
| 360 | 20680000 | 4 | Zylinderschraube M8x50 | cylindrical head screw | vis cylindrique | vite |
| 370 | 20048100 | 8 | Senkschraube M8x20 | countersunk | vis à tête noyée | vite |
| 380 | 20183000 | 4 | Scheibe 5,3 | washer | rondelle | rondella |
| 390 | 20113000 | 1 | Scheibe 6,4 | washer | rondelle | rondella |
| 400 | 20633700 | 3 | Scheibe 8,4 | washer | rondelle | rondella |

Chassis kpl. 21694230

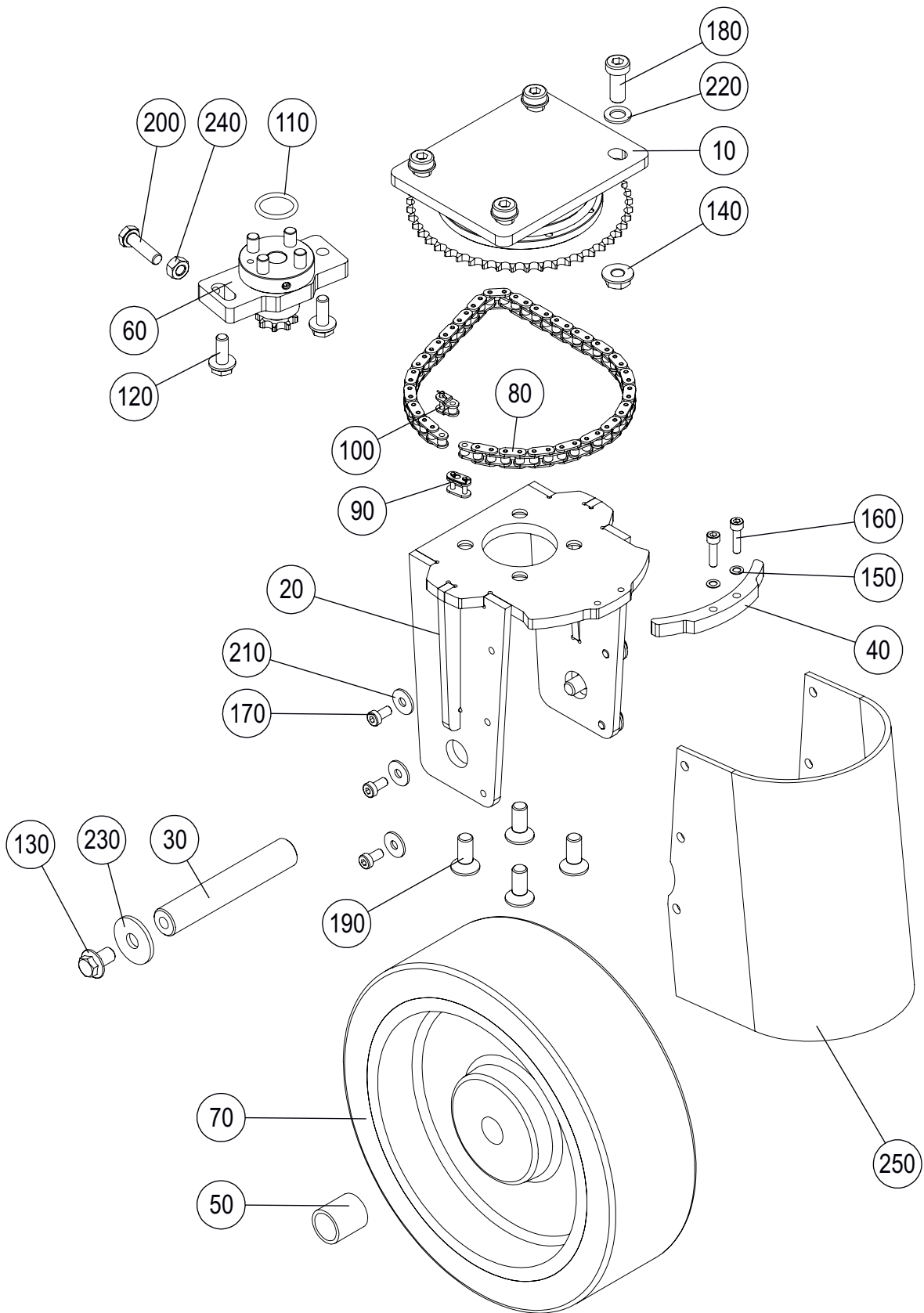
| Pos. | Art.Nr. | Stück | Bezeichnung | Description | Designation | Descrizione |
|------|----------|-------|----------------------------|------------------------|-----------------|----------------|
| 410 | 20067600 | 6 | Scheibe 8,4x16,0x1,6 | washer | rondelle | rondella |
| 420 | 20011500 | 2 | 6-Kantmutter M 3 | hex.nut | écrou hexagonal | dado esagonale |
| 430 | 20070001 | 1 | 6-Kantmutter M 6 stop | hex.nut | écrou hexagonal | dado esagonale |
| 440 | 20278200 | 1 | Zylinderschr.DUO-T.EM 5x16 | cylindrical head screw | vis cylindrique | vite |
| 450 | 20976600 | 2 | Kabelbinder TY 1435 M | cable strip | attache rapide | strip cavo |

Fahrertrieb



| Pos. | Art.Nr. | Stück | Bezeichnung | Description | Designation | Descrizione |
|------|----------|-------|--|---------------------------------------|---|---|
| 10 | 21688900 | 2 | Nabe | hub | moyeu | mozzo |
| 20 | 21650300 | 2 | Radscheibe | washer | rondelle | rondella |
| 30 | 21717000 | 1 | Fahrertr. MRP8D 24V 900W | traction drive | entraînement | motore trazione |
| 40 | 21751200 | 1 | Bremse 8Nm | brake | frein | freno |
| | 21751300 | 1 | Bremse 12Nm für Option Leistungssteigerungs- kit | optional brake for performance kit | frein en option pour kit performance | freno opzionale para kit prestazioni |
| 50 | 21686900 | 2 | Rad 308x90 | wheel | roue | ruota |
| 60 | 20005500 | 2 | Sicherungsscheibe SMZ 8 | washer | rondelle | rondella |
| 70 | 20045400 | 8 | Sicherungsscheibe SMZ10 | washer | rondelle | rondella |
| 80 | 20068002 | 2 | 6-Kantschraube M8x20 | hexagon screw | vis à tête hex. | vite esagonale |
| 90 | 20186200 | 6 | 6-Kantschraube M8x30 | hexagon screw | vis à tête hex. | vite esagonale |
| 100 | 21707700 | 8 | Zylinderschraube M10x110 | cylindrical head screw | vis cylindrique | vite |
| 110 | 20633700 | 6 | Scheibe 8,4 | washer | rondelle | rondella |
| 120 | 21057601 | 2 | Passfeder 8x7x30 A2 | featherkey | ressort d'ajustage | linguetta |
| 130 | 21618600 | 2 | Aderendhülse | ferrule | embouts terminaux | tubetto terminale |

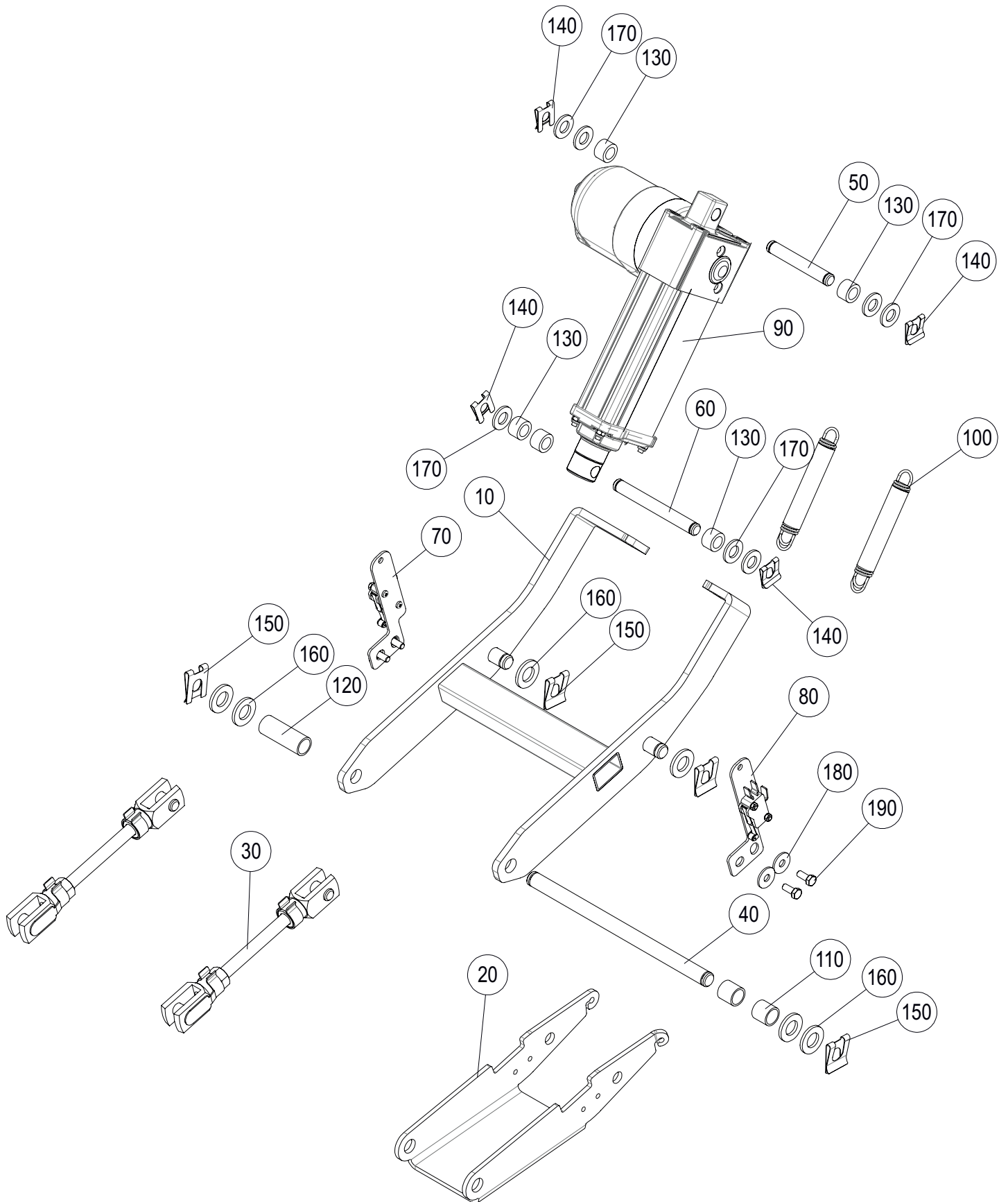
Vorderrad



Vorderrad

| Pos. | Art.Nr. | Stück | Bezeichnung | Description | Designation | Descrizione |
|------|----------|-------|----------------------------|-----------------------------|-----------------------------|-------------------------------|
| 10 | 21165730 | 1 | Drehkranz mit Kettenrad | turntable + chain wheel | pignon avec support rotatif | Pignone con supporto rotante |
| 20 | 21165600 | 1 | Radhalter | wheel holder | support de roue | supporto per ruota |
| 30 | 20972700 | 1 | Radachse | wheel axle | essieu-axe | asse della ruota |
| 40 | 21416800 | 1 | Steuerkurve | cam | came | camma |
| 50 | 21171600 | 2 | Distanzhülse 25x20x27 | distance piece | douille d'écartement | distanziale |
| 60 | 21708180 | 1 | Spanneinheit | chain tightener cpl. | tendeur chaîne | tendicatena |
| 70 | 21417600 | 1 | Vorderrad D254 | front wheel | roue a nt | ruota anteriore |
| 80 | 21171300 | 1 | Rollenkette 06B-1 51 Glied | roller chain | chaîne articulée | catena a rulli |
| 90 | 21171310 | 1 | Verschlussglied 06B-1 ger. | seal element, chain | élément de fermeture | elemento di chiusura |
| 100 | 21171312 | 1 | Verschlussglied gekröpft | cranked seal element, chain | élément de fermeture coudé | elemento di chiusura a gomito |
| 110 | 20093300 | 1 | O-Ring 22x3 | O-ring | joint ronde | guarnizione |
| 120 | 20195300 | 2 | Verbusschraube M 8x20 | hexagon screw | vis a tete hex. | vite |
| 130 | 20984300 | 2 | Verbusschraube M10x16 | hexagon screw | vis a tete hex. | vite |
| 140 | 20681700 | 4 | Verbussmutter M10 | hex.nut | écrou hexagonal | dado esagonale |
| 150 | 20067400 | 2 | Sicherungsscheibe SMZ 5 | washer | rondelle | rondella |
| 160 | 20009400 | 2 | Zylinderschraube M5x20 | cylindrical head screw | vis cylindrique | vite |
| 170 | 20151900 | 6 | Zylinderschraube M6x12 | cylindrical head screw | vis cylindrique | vite |
| 180 | 20679900 | 4 | Zylinderschraube M10x25 | cylindrical head screw | vis cylindrique | vite |
| 190 | 21171500 | 4 | Senkschraube M10x25 | countersunk | vis à tête noyée | vite |
| 200 | 20186200 | 1 | 6-Kantschraube M8x30 | hexagon screw | vis à tête hex. | vite esagonale |
| 210 | 20113000 | 6 | Scheibe 6,4 | washer | rondelle | rondella |
| 220 | 20054500 | 4 | Scheibe 10,5 | washer | rondelle | rondella |
| 230 | 20627600 | 2 | Scheibe 11,0x34,0x3,0 | washer | rondelle | rondella |
| 240 | 20000500 | 1 | 6-Kantmutter M8 d | hex.nut | écrou hexagonal | dado esagonale |
| 250 | 20984400 | 1 | Spritzschutz | splashguard | garde-boue | paraspruzzi |

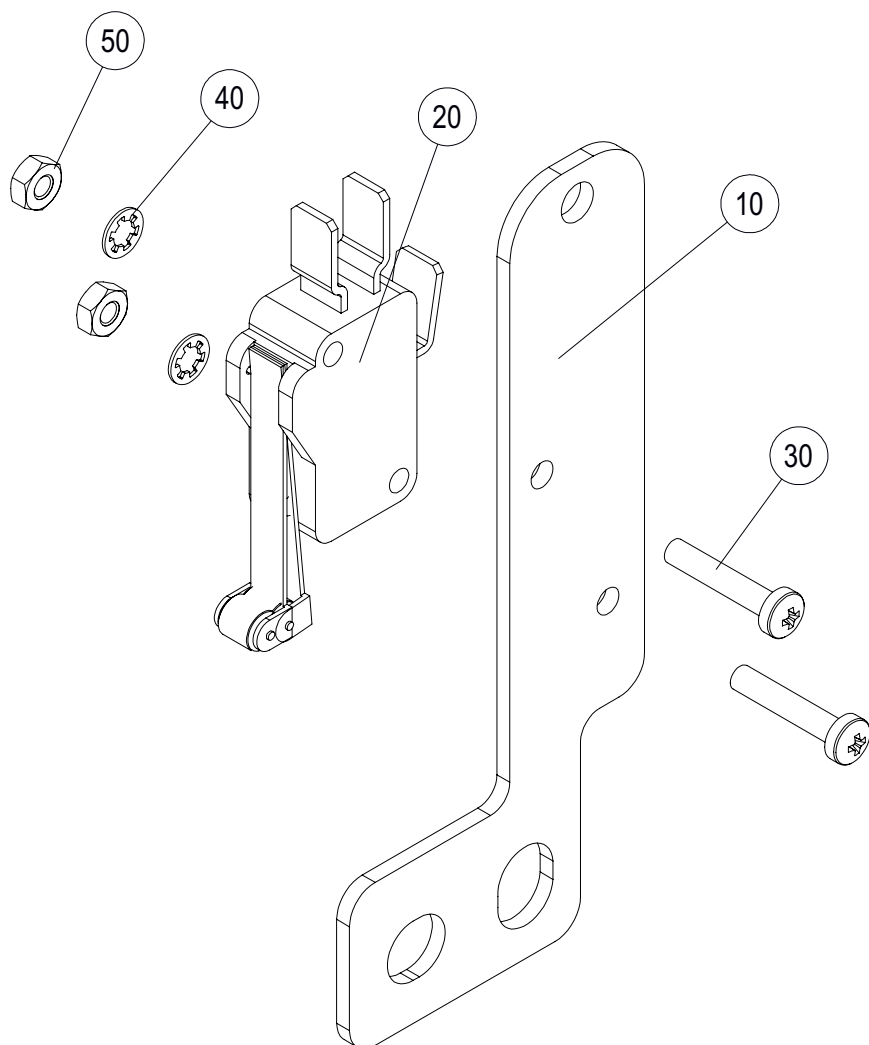
Hebemechanik



Hebemechanik

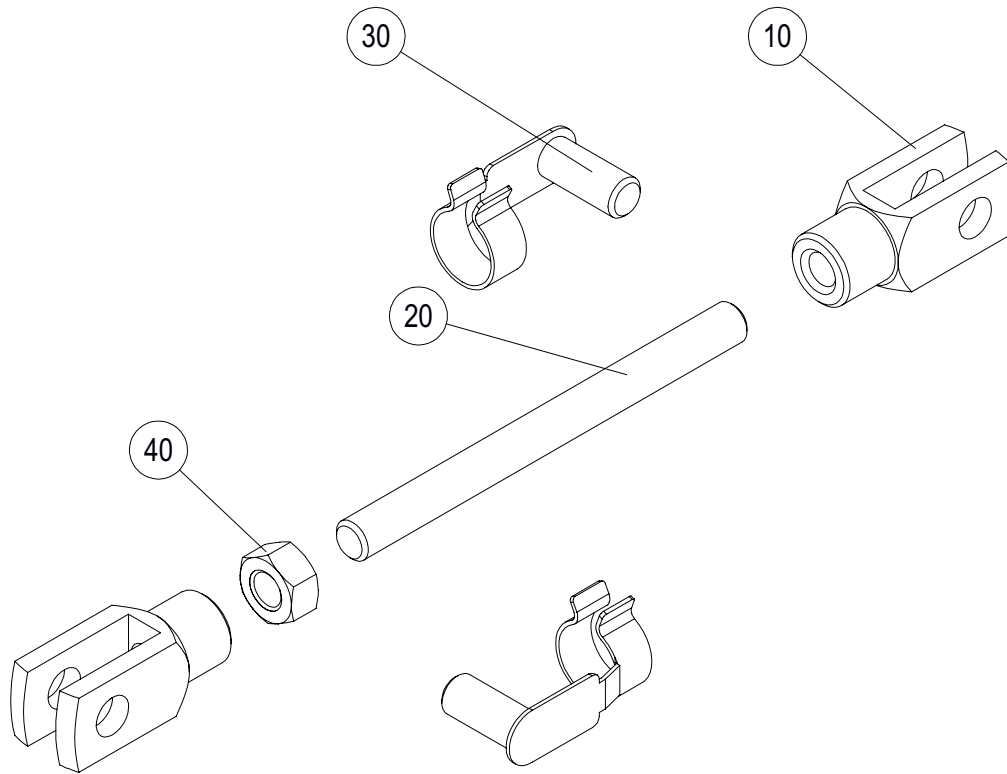
| Pos. | Art.Nr. | Stück | Bezeichnung | Description | Designation | Descrizione |
|------|----------|-------|----------------------------|----------------------|-----------------------------------|----------------------------------|
| 10 | 21689200 | 1 | Bürsthebel | lever | levier | le |
| 20 | 21689100 | 1 | Druckhebel | lever | levier | le |
| 30 | 21709030 | 2 | Koppel | coupling bar | barre d'accouplement | barra accoppiamento |
| 40 | 21691200 | 1 | Achse | axle | axe | asse |
| 50 | 21542300 | 1 | Achse Actuator | axle | axe | asse |
| 60 | 21567700 | 1 | Bolzen Ø10x82 | bolt | boulon | bullone |
| 70 | 21709330 | 1 | Halter Microschalter links | left switch support | support micro interrupteur gauche | Porta microinterruttore sinistro |
| 80 | 21750930 | 1 | Halter Microschalter recht | right switch support | support micro interrupteur droit | Porta microinterruttore destro |
| 90 | 21709500 | 1 | Linearantrieb 110mm | linear actuator | actionneur linéaire | attuatore lineare |
| 100 | 21626800 | 2 | Zugfeder RZ-144I | extension spring | ressort | molla di trazione |
| 110 | 21246303 | 2 | Distanzbuchse 13x16x15 | spacer | manchon d'espacement | distanziale |
| 120 | 21246301 | 1 | Distanzbuchse | spacer | manchon d'espacement | distanziale |
| 130 | 21166900 | 5 | Distanzhülse 15x10,3x10 PA | spacer PA | manchon d'espacement PA | distanziale PA |
| 140 | 20373900 | 4 | SL-Sicherung 10 MBO 08 | safety piece | collier d'épauleme | pezzo di sicurezza |
| 150 | 20373800 | 4 | SL-Sicherung 12 MBO 08 | safety piece | collier d'épauleme | pezzo di sicurezza |
| 160 | 20622600 | 6 | Scheibe 13x24x2,5 PA | washer | rondelle | rondella |
| 170 | 20373700 | 7 | Scheibe 10,5x20,0x2,0 PA | washer PA | rondelle PA | rondella PA |
| 180 | 20113000 | 4 | Scheibe 6,4 | washer | rondelle | rondella |
| 190 | 20119500 | 4 | 6-Kantschraube M5x12 | hexagon screw | vis à tête hex. | vite esagonale |

Halter Mikroschalter



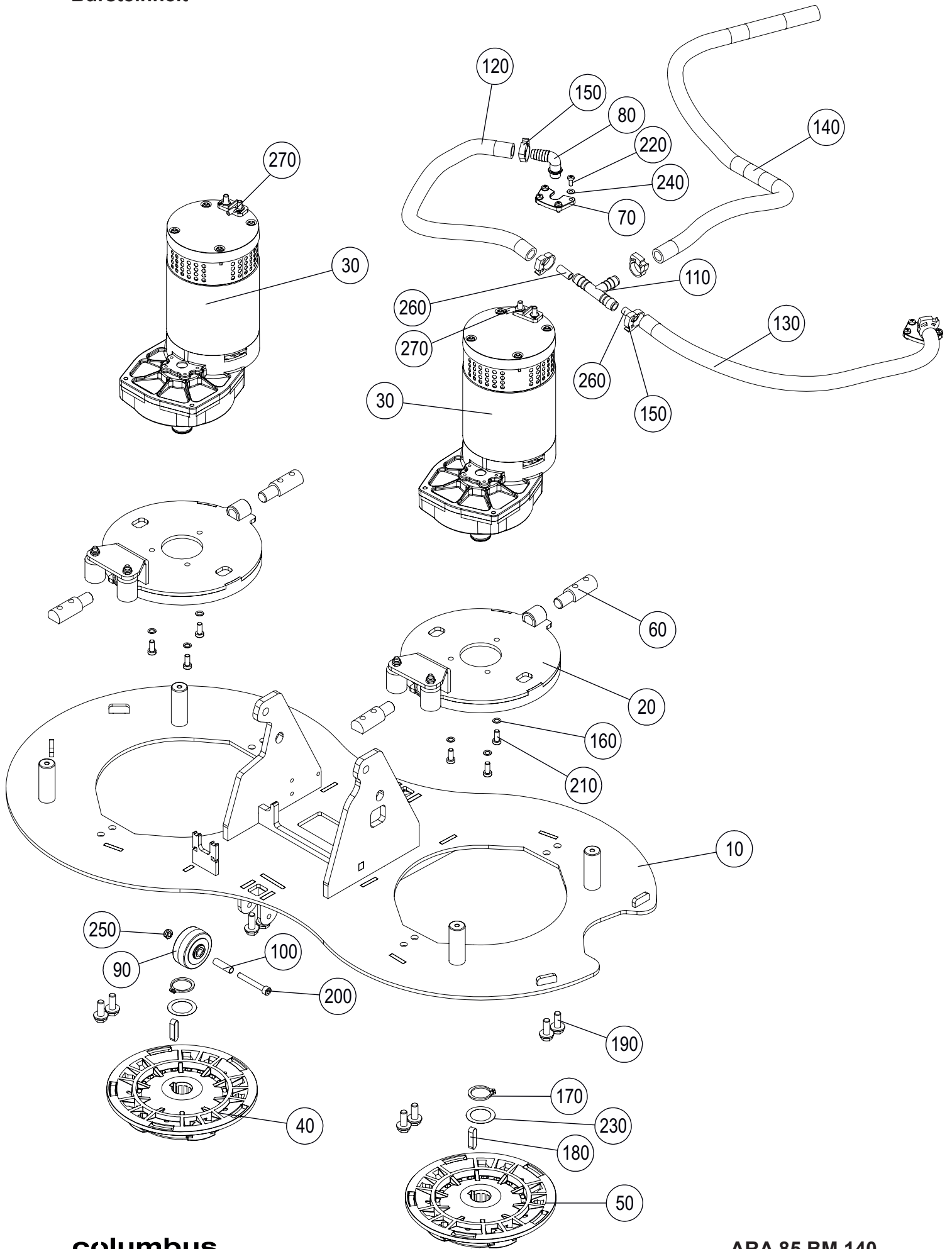
| Pos. | Art.Nr. | Stück | Bezeichnung | Description | Designation | Descrizione |
|------|----------|-------|----------------------------|----------------------|-------------------------|--------------------------|
| 10 | 21689400 | 1 | Halter Mikroschalter | support micro switch | support mic. interrupt. | supporto mic.interrutt. |
| 20 | 20958800 | 1 | Microschalter | microswitch | microcommutateur | microinterruttore |
| 30 | 20018400 | 2 | Linsenschraube M3x16 VA | lens screw | vis à tête bombée | vite a testa lenticolare |
| 40 | 20165400 | 2 | Sicherungsscheibe SMZ 3 vz | lock washer | rondelle de blocage | anello di sicurezza |
| 50 | 20011500 | 2 | 6-Kantmutter M 3 vz | hex.nut | écrou hexagonal | dado esagonale |

Koppel



| Pos. | Art.Nr. | Stück | Bezeichnung | Description | Designation | Descrizione |
|------|----------|-------|------------------------|--------------|-------------------|-------------------|
| 10 | 20627200 | 2 | Gabelkopf G10x20 | fork head | tête à fourche | testa di forcella |
| 20 | 21690300 | 1 | Gewindestange M10 | threaded bar | tige filetée | asta filettata |
| 30 | 20631000 | 2 | Federklappbolzen 10x20 | snap-on clip | étrier de ressort | bullone |
| 40 | 20054400 | 1 | 6-Kantmutter M10 VA | hex.nut | écrou hexagonal | dado esagonale |

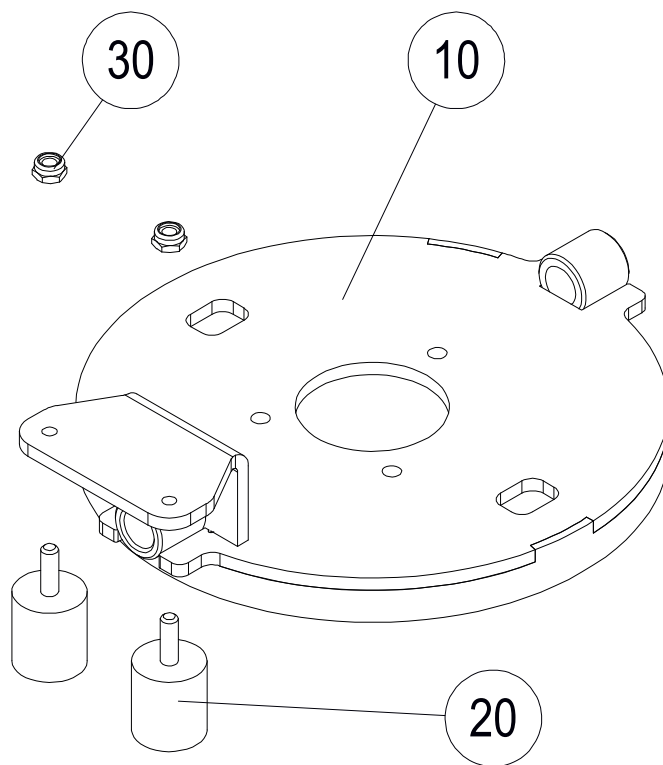
Bürsteinheit



Bürsteinheit

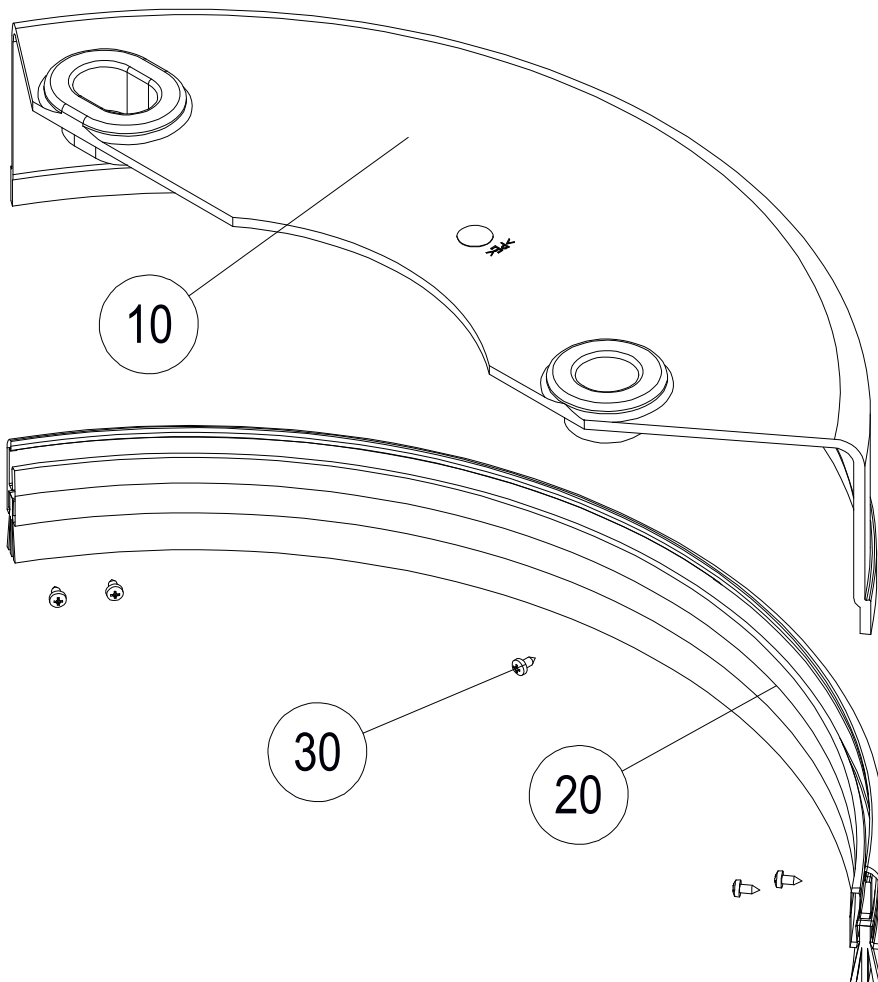
| Pos. | Art.Nr. | Stück | Bezeichnung | Description | Designation | Descrizione |
|------|----------|-------|----------------------------|-------------------------|------------------------------|------------------------------|
| 10 | 21689300 | 1 | Bürstplatte | brush plate | plaque de brosse | piatto pennello |
| 20 | 21612132 | 2 | Bürstplatte mit Puffer | brush plate with bumper | plaque de brosse avec tampon | piatto pennello con tampone |
| 30 | 21387002 | 2 | Bürstenmotor 800W 24V | brush motor | Moteur de brosse | Motore a spazzole |
| 40 | 21050500 | 1 | Bürstaufnahme grau | brush holder, gray | Porte-balais, gris | portaspazzole, grigio |
| 50 | 21050501 | 1 | Bürstaufnahme schwarz | brush holder, black | Porte-balais, noir | portaspazzole, nero |
| 60 | 21050800 | 4 | Gelenk | articulation | articulation | articolazione |
| 70 | 21650900 | 2 | Befestigungsplatte | plate | Plaque | piastra |
| 80 | 21651000 | 2 | Anschlussstück | hose clamp | support pour tuyau | fascetta tubo |
| 90 | 20442402 | 2 | Gummirolle D50 | roller | Roulette | rotella |
| 100 | 20442403 | 2 | Hülse f.Gummirolle L=28 | sleeve | douille | boccola |
| 110 | 31047300 | 1 | T-Stück 12 | hose nozzle | Tubulure fileté | beccocio tubo |
| 120 | 50680800 | 0,4m | Schlauch 12,5x3 | hose | tuyau | tubo flessibile |
| 130 | 50680800 | 0,4m | Schlauch 12,5x3 | hose | tuyau | tubo flessibile |
| 140 | 50680800 | 0,7m | Schlauch 12,5x3 | hose | tuyau | tubo flessibile |
| 150 | 20596500 | 5 | Schlauchklemme D17-18,5 | hose clamp | collier | fascetta per tubi flessibili |
| 160 | 20008000 | 6 | Sicherungsscheibe SMZ 6 | lock washer | rondelle de blocage | anello di sicurezza |
| 170 | 21057700 | 4 | Sicherungsring AS 25x2 | circlip AS 25x2 | rondelle de sécurité AS 25x2 | anello d'arresto AS 25x2 |
| 180 | 21057601 | 2 | Passfeder 8x7x30 A2 Form A | feather key | ressort d'ajustage | linguetta di aggiust. |
| 190 | 20195300 | 8 | Verbusschraube M 8x20 | hexagon screw | vis a tete hex. | vite |
| 200 | 20114300 | 2 | Zylinderschraube M6x50 | cylindrical-head screw | vis cylindrique | vite a testa cilindrica |
| 210 | 20567500 | 6 | Zylinderschraube M 6x14 | cylindrical-head screw | vis cylindrique | vite a testa cilindrica |
| 220 | 21571300 | 8 | Linsenschr.DUO-T.CM 4x10 | lens screw | vis à tête bombée | vite a testa lenticolare |
| 230 | 21045700 | 4 | Pass-Scheibe 25x35x0,2 | shim ring | rondelle d'ajustage | rondella di aggiustamento |
| | 21045700 | | Pass-Scheibe 25x35x0,1 | shim ring | rondelle d'ajustage | rondella di aggiustamento |
| 240 | 20000300 | 8 | Scheibe 4,3x9,0x0,8 Ms | washer | rondelle | rondella |
| 250 | 20070000 | 2 | 6-Kantmutter M 6 stop | hex.nut | écrou hexagonal | dado esagonale |
| 260 | 50268400 | 0,04m | Schlauch 6x1,5 | hose | tuyau | tubo flessibile |
| 270 | 21077400 | 2 | Suppressordiode | suppressordiode | diode de suppression | diodo soppressore |

Bürstplatte mit Puffer



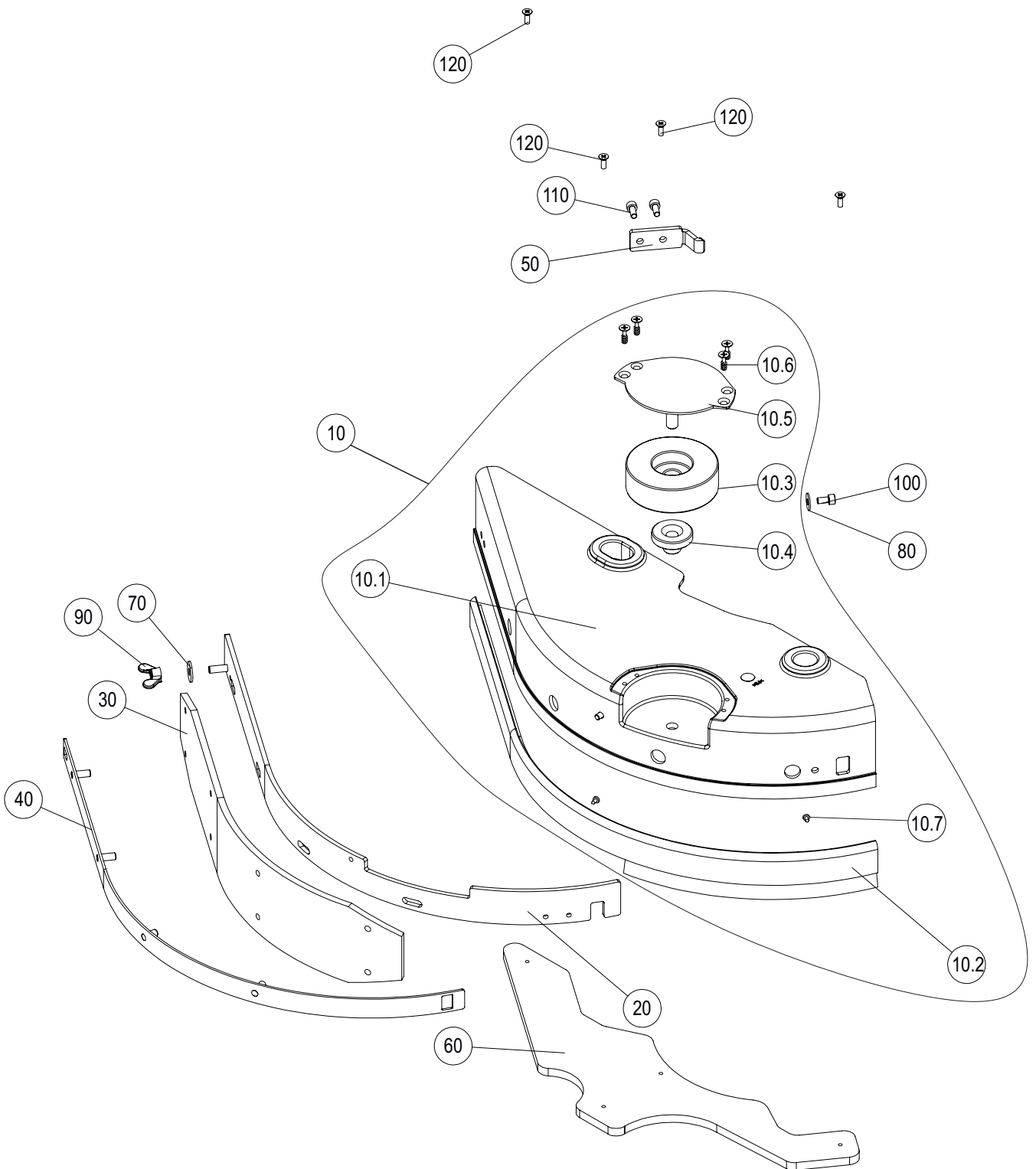
| Pos. | Art.Nr. | Stück | Bezeichnung | Description | Designation | Descrizione |
|------|----------|-------|--------------------------|-------------|------------------|------------------------|
| 10 | 21050407 | 1 | Bürstplatte | brush plate | plaque de brosse | piastra della spazzola |
| 20 | 21054800 | 2 | Gummi-Metall-Puffer hart | bumper | tampon | tampone |
| 30 | 20070000 | 2 | 6-Kantmutter M 6 stop | hex.nut | écrou hexagonal | dado esagonale |

Bürstabdeckung links



| Pos. | Art.Nr. | Stück | Bezeichnung | Description | Designation | Descrizione |
|-----------|----------|-------|----------------------------|-----------------------------------|----------------------------------|-------------------------|
| | 21709230 | 1 | Bürstabdeckung links kpl. | brush cover left cpl. | Couverture de brosse gauche cpl. | copertura sinistra cpl. |
| 10 | 21461300 | 1 | Bürstabdeckung links | brush cover | Couverture de brosse | copertura |
| 20 | 21051100 | 0,5 | Halteprofil+Bürstenstreif. | fixation profile for brush strips | profile de fixation | profilo fermarsi |
| 30 | 20048300 | 5 | Blehschr.Li C 2,9x6,5 VA | screw | Vis | vite |

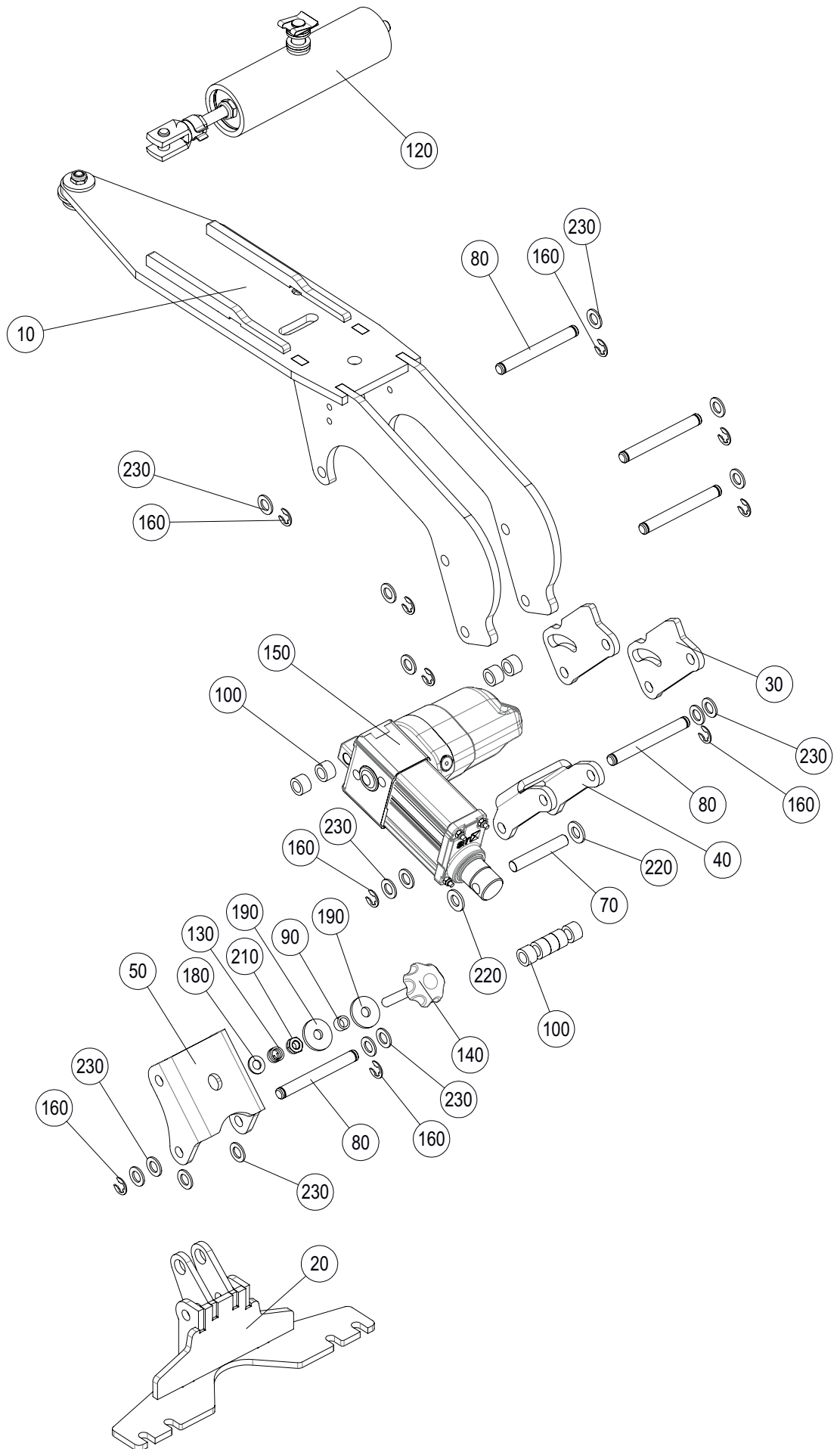
Seitenschieber



Seitenschieber

| Pos. | Art.Nr. | Stück | Bezeichnung | Description | Designation | Descrizione |
|-------------|----------|-------|----------------------------|-----------------------------------|--------------------------------|--------------------------|
| | 21709730 | 1 | Seitenschieber kpl. | slider right cpl. | curseur à droite cpl. | cursore destro cpl. |
| 10 | 21730100 | 1 | Bürstabdeckung rechts kpl. | brush cover right cpl. | Couvercle de brosse droit cpl. | copertura destra cpl. |
| 10.1 | 21461200 | 1 | Bürstabdeckung rechts | brush cover right | Couvercle de brosse droit | copertura destra |
| 10.2 | 21051100 | 0,5 | Halteprofil+Bürstenstreif. | fixation profile for brush strips | profile de fixation | profilo fermarsi |
| 10.3 | 21053700 | 1 | Abweisrolle D80 | deflector roller | Rouleau défecteur | rullo deflettore |
| 10.4 | 21054600 | 1 | Führungsstopfen | stopper | Bouchon | tappo |
| 10.5 | 21057800 | 1 | Platte Abweisrolle | plate | Plaque | piastra |
| 10.6 | 20681900 | 4 | Kunststoffschraube 5x16 | screw | Vis | vite |
| 10.7 | 20048300 | 5 | Blechschr.Li C 2,9x6,5 VA | screw | Vis | vite |
| 20 | 21696800 | 1 | Klemmband | clamping strip | fixation | set piattina bloccagomma |
| 30 | 21696500 | 1 | Schiebergummi | blade | Raclette | gomma |
| 40 | 21696400 | 1 | Klemmband | clamping strip | Fixation | set piattina bloccagomma |
| 50 | 21696300 | 1 | Klemmbandhalter | holder | support | staffa |
| 60 | 21719500 | 1 | Gewichtplatte | weight plate | plaque de poids | piastra di peso |
| 70 | 20113000 | 1 | Scheibe 6,4 VA | washer | rondelle | rondella |
| 80 | 20183000 | 2 | Scheibe 5,3 VA | washer | rondelle | rondella |
| 90 | 20623100 | 1 | Flügelmutter M6 VA | wing nut | Écrou à oreilles | dado a farfalla |
| 100 | 20730900 | 2 | Zylinderschraube M5x10 VA | cylindrical-head screw | vis cylindrique | vite a testa cilindrica |
| 110 | 20149200 | 2 | Zylinderschraube M5x12 VA | cylindrical-head screw | vis cylindrique | vite a testa cilindrica |
| 120 | 20223400 | 4 | Senkschraube M4x12 VA | countersunk screw | vis à tête noyée | vite a testa s sata |

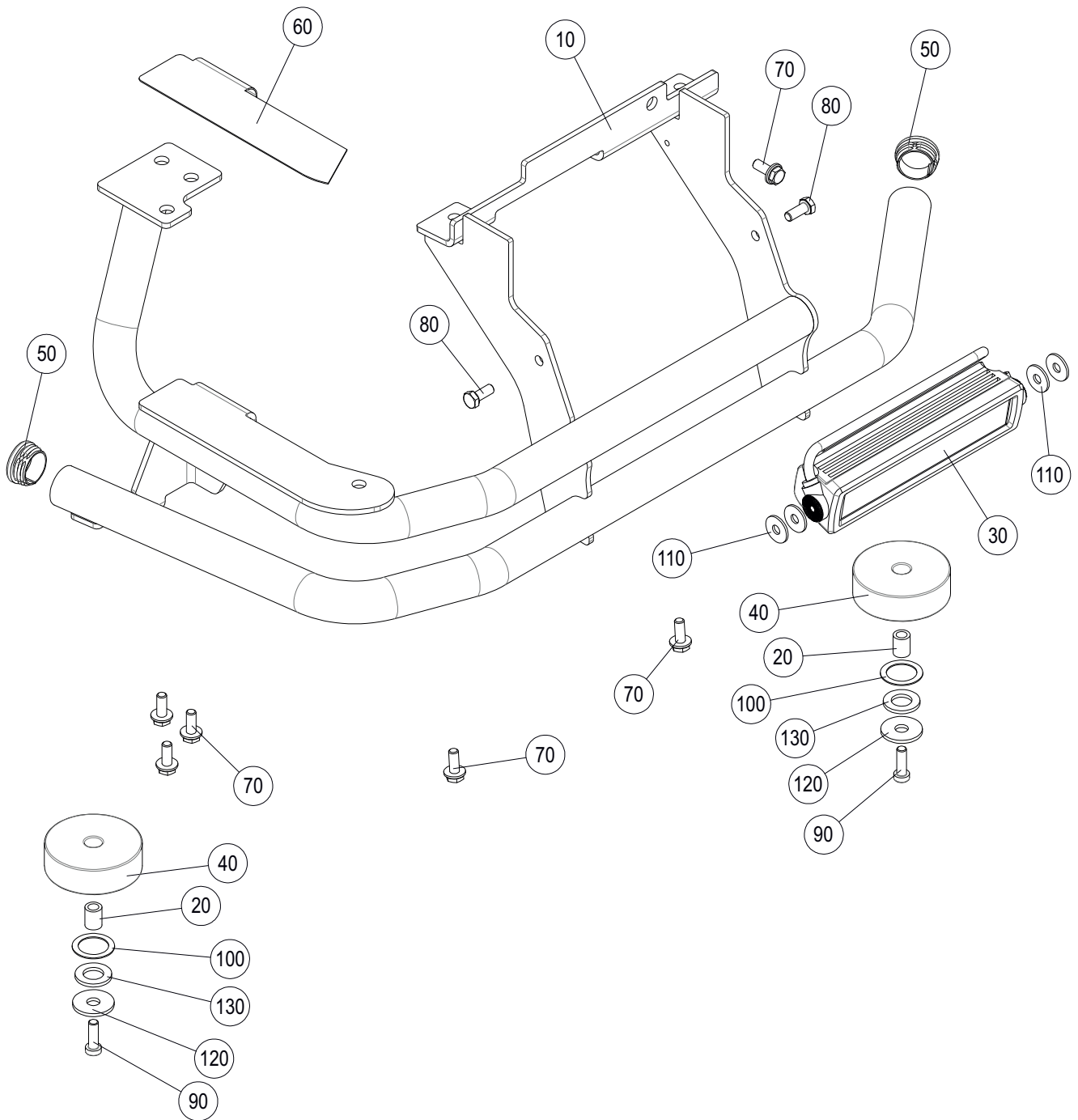
Düsenanhebung



Düsenanhebung

| Pos. | Art.Nr. | Stück | Bezeichnung | Description | Designation | Descrizione |
|------|----------|-------|----------------------------|-----------------------|---------------------------|------------------------|
| 10 | 21567100 | 1 | Düsenanheb. Rahmen | frame | cadre | telaio |
| 20 | 21567600 | 1 | Düsenhalter | support squeegee tool | support buse d'aspiration | supporto bocchetta |
| 30 | 21567300 | 2 | Hebel | lever | levier | le |
| 40 | 21567400 | 1 | Hebel oben | lever | levier | le |
| 50 | 21616500 | 1 | Gelenk Gerätedüse | articulation | articulation | articolazione |
| 60 | 20801300 | 1 | Gelenk Düsenneigung | articulation | articulation | articolazione |
| 70 | 21616600 | 1 | Bolzen Ø10x61 | bolt | boulon | bullone |
| 80 | 21567700 | 5 | Bolzen Ø10x82 | bolt | boulon | bullone |
| 90 | 21176700 | 1 | Distanzbuchse D12/d8,5x7 | spacer | manchon d'espacement | distanziale |
| 100 | 21166900 | 9 | Distanzhülse 15x10,3x10 PA | spacer | douille d'écartement | distanziale |
| 110 | 21464900 | 1 | Gleitplatte | sliding plate | plaque coulissante | piastra scorrevole |
| 120 | 21602580 | 1 | Federrohr kpl. | tube | tube | tubo |
| 130 | 20856100 | 1 | Druckfeder VD-207KA | pression spring | ressort compression | molla di compressione |
| 140 | 20585500 | 1 | Sterngriffschraube M8x55 | star wheel screw | vis avec poignée étoile | vite grip a stella |
| 150 | 21567200 | 1 | Linearantrieb 36V | linear actuator | actionneur linéaire | attuatore lineare |
| 160 | 20452700 | 10 | Sicherungsscheibe 8 | lock washer | rondelle de blocage | anello di sicurezza |
| 170 | 20186200 | 1 | 6-Kantschraube M8x30 | hex.head screw | vis à tête hex. | vite a testa esagonale |
| 180 | 20067600 | 3 | Scheibe 8,4x16,0x1,6 | washer | rondelle | rondella |
| 190 | 20277800 | 4 | Scheibe 9,0x28,0x3,0 | washer | rondelle | rondella |
| 200 | 20938500 | 1 | Scheibe 21,0 PA | washer | rondelle | rondella |
| 210 | 20280500 | 2 | 6-Kantmutter M8 stop MOQ10 | hex.nut | écrou hexagonal | dado esagonale |
| 220 | 20373700 | 2 | Scheibe 10,5x20,0x2,0 PA | washer | rondelle | rondella |
| 230 | 20054500 | 16 | Scheibe 10,5 | washer | rondelle | rondella |

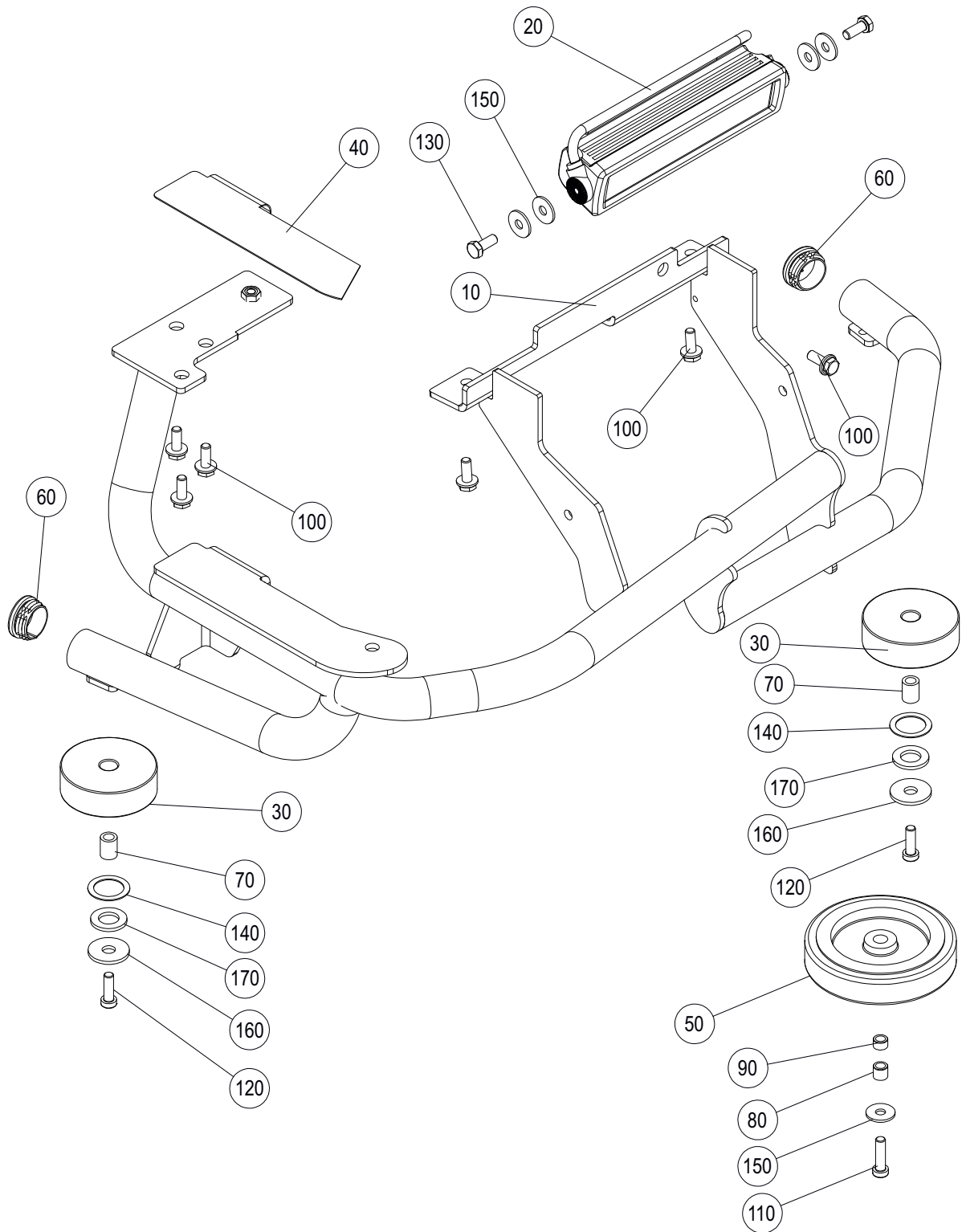
Stoßstange für Bürsttaggregat ohne Seitenbesen



Stoßstange für Bürstaggregat ohne Seitenbesen

| Pos. | Art.Nr. | Stück | Bezeichnung | Description | Designation | Descrizione |
|------|----------|-------|---|--|--|---|
| | 21776430 | 1 | Stoßstange für Bürstaggregat ohne Seitenbesen | Bumper for brush unit without side brush | pare-chocs pour unité de brossage sans brosse latérale | Paraurti per gruppo spazzolante senza spazzola laterale |
| 10 | 21691300 | 1 | Stoßstange | bumper | pare-chocs | paraurti |
| 20 | 21014500 | 2 | Distanzrohr | distance piece | douille d'écartement | distanziale |
| 30 | 21719700 | 1 | LED-Leiste | LED bar | barre LED | barra LED |
| 40 | 21053700 | 2 | Abweisrolle D80 | deflector roll | rouleau déflecteur | rotolo deflettore |
| 50 | 21707900 | 2 | Rohreinsatz | pipe insert | Insert de tuyau | Inserto per tubi |
| 60 | 21746500 | 1 | Gleitschutzband | sand paper | papier sablé | carta vetrata |
| 70 | 20195300 | 6 | Verbusschraube M 8x20 | hexagon screw | vis a tete hex. | vite |
| 80 | 21636001 | 2 | 6-Kantschraube M8x20 | hexagon screw | vis à tête hex. | vite esagonale |
| 90 | 20029200 | 2 | Zylinderschraube M8x25 | cylindrical head screw | vis cylindrique | vite |
| 100 | 20574200 | 2 | Pass-Scheibe 25x35x1,0 | shim ring | rondelle d'ajustage | rondella di aggiustamento |
| 110 | 20633700 | 4 | Scheibe 8,4 | washer | rondelle | rondella |
| 120 | 20627600 | 2 | Scheibe 11,0x34,0x3,0 | washer | rondelle | rondella |
| 130 | 20627500 | 2 | Scheibe 17,0x30,0x3,0 PA | washer | rondelle | rondella |

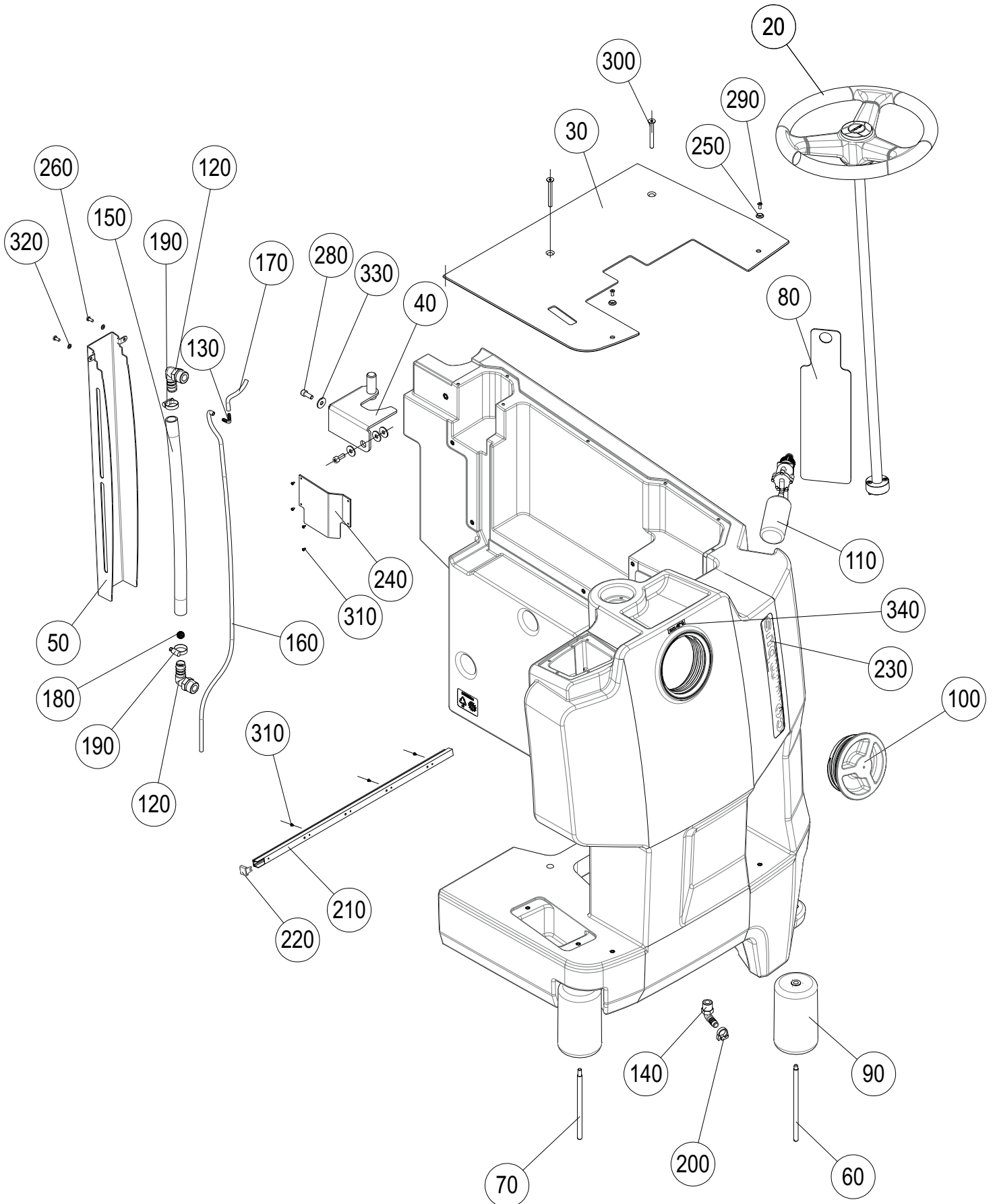
Stoßstange für Walze oder Seitenbesen



Stoßstange für Walze oder Seitenbesen

| Pos. | Art.Nr. | Stück | Bezeichnung | Description | Designation | Descrizione |
|------|----------|-------|--|--------------------------------------|---|--|
| | 21776530 | | Stoßstange für Walzen oder Seitenbesen | Bumper for roller unit or side brush | pare-chocs pour unité à rouleaux or brosse latérale | Paraurti per unità rullo o spazzola laterale |
| 10 | 21725300 | 1 | Stoßstange | bumper | pare-chocs | paraurti |
| 20 | 21719700 | 1 | LED-Leiste | LED bar | barre LED | barra LED |
| 30 | 21053700 | 2 | Abweisrolle D80 | deflector roll | rouleau déflecteur | rotolo deflettore |
| 40 | 21746500 | 1 | Gleitschutzband | sand paper | papier sablé | carta vetrata |
| 50 | 21776700 | 1 | Laufrolle Ø125 | wheel Ø125 | Roue Ø125 | ruota Ø125 |
| 60 | 21707900 | 2 | Rohreinsatz | pipe insert | Insert de tuyau | Inserto per tubi |
| 70 | 21014500 | 2 | Distanzrohr Zwischenplatte | spacer | entretoise | distanziale |
| 80 | 21528400 | 1 | Distanzbuchse 8x12x11 | spacer | entretoise | distanziale |
| 90 | 20619900 | 1 | Distanzbuchse D12/d8,0x7,5 | spacer | entretoise | distanziale |
| 100 | 20195300 | 6 | Verbusschraube M 8x20 | hexagon screw | vis a tete hex. | vite |
| 110 | 20279100 | 1 | Zylinderschraube M8x30 | cylindrical head screw | vis cylindrique | vite |
| 120 | 20029200 | 2 | Zylinderschraube M8x25 | cylindrical head screw | vis cylindrique | vite |
| 130 | 21636001 | 2 | 6-Kantschraube M8x20 A2-80 | hexagon screw | vis a tete hex. | vite |
| 140 | 20574200 | 2 | Pass-Scheibe 25x35x1,0 | shim ring | rondelle d'ajustage | rondella di aggiustamento |
| 150 | 20633700 | 5 | Scheibe 8,4 | washer | rondelle | rondella |
| 160 | 20627600 | 2 | Scheibe 11,0x34,0x3,0 | washer | rondelle | rondella |
| 170 | 20627500 | 2 | Scheibe 17,0x30,0x3,0 PA | washer | rondelle | rondella |

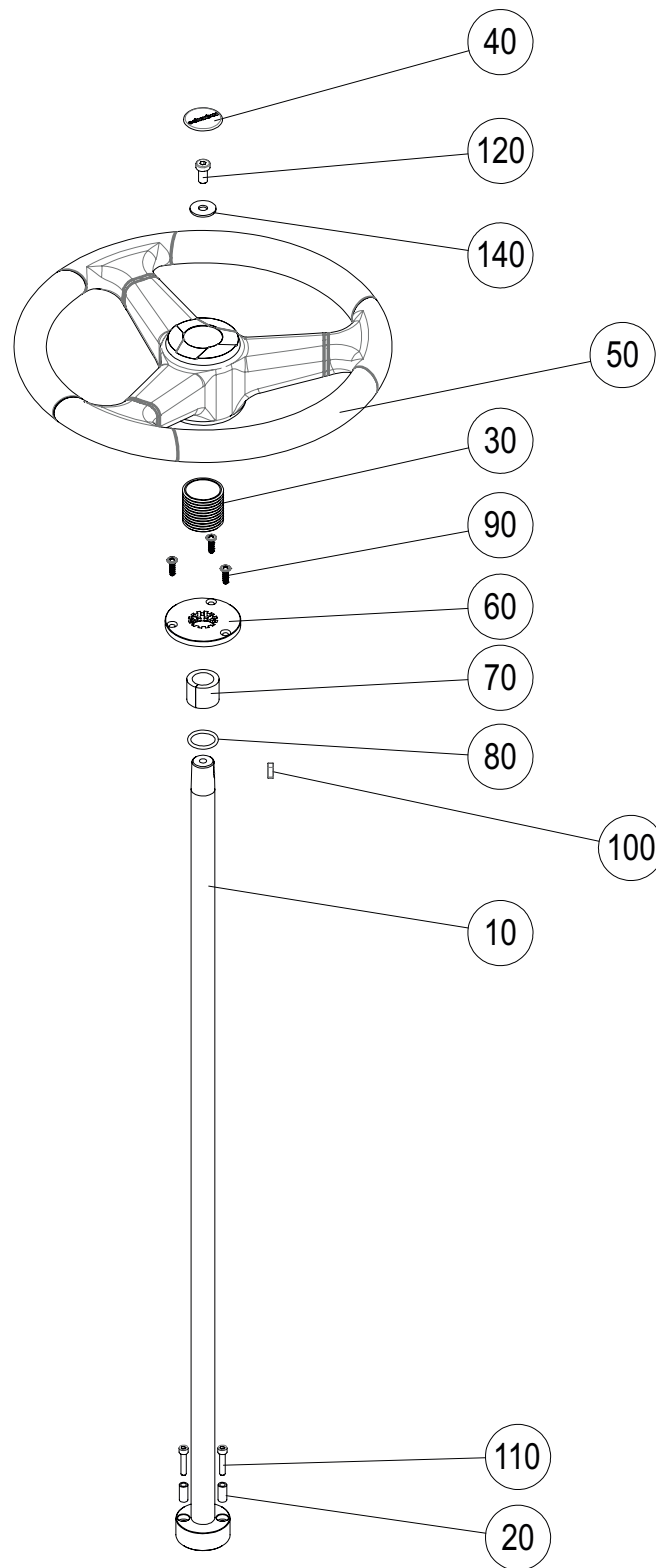
FW-Tank



FW-Tank

| Pos. | Art.Nr. | Stück | Bezeichnung | Description | Designation | Descrizione |
|------|----------|-------|----------------------------|-------------------------------|---------------------------|-----------------------------------|
| 10 | 21686600 | 1 | FW-Tank ARA140 | solution tank | réservoir eau fraîche | serbatoio soluzione detergente |
| 20 | 21728080 | 1 | Lenkrad mit Lenkstange | Steering wheel with handlebar | volant avec guidon | Volante con manubrio |
| 30 | 21691400 | 1 | Trittlech | step plate | marchepied | montatoio |
| 40 | 21690100 | 1 | Scharnier | hinge | charnière | cerniera |
| 50 | 21690900 | 1 | Abdeckung Lenkstange | cover | couverture | couverture |
| 60 | 21032900 | 1 | Achse Abweisrolle | axle | axe | assale |
| 70 | 21603000 | 1 | Achse Abweisrolle | axle | axe | assale |
| 80 | 21718200 | 1 | Schwappblech | splash plate | plaque anti-éclaboussures | piastra antispruzzo |
| 90 | 21032801 | 2 | Abweisrolle | deflector roller | rouleau déflecteur | rullo deflettore |
| 100 | 21368300 | 2 | Tankschraubdeckel m.O-Ring | screwed lid | couvercle vissée | coperchio filettato |
| 110 | 21058380 | 1 | Schwimmer | float | flotteur | galleggiante |
| 120 | 30272700 | 2 | Winkel-Einschraubstutzen | angled hose nozzle, | tubulure équerre filetée | beccucio tubo flessibile avvitato |
| 130 | 21041800 | 1 | Verbindungsstutzen | connecting pipe | tube de connexion | tubo di collegamento |
| 140 | 20805300 | 1 | Winkel-Einschraubstutzen | angled hose nozzle, | tubulure équerre filetée | beccucio tubo flessibile avvitato |
| 150 | 50203100 | 0,51m | Schlauch 20x3,0x... | hose | tuyau | tubo |
| 160 | 50986300 | 0,9m | PVC-Schlauch transp. 5x1,5 | hose | tuyau | tubo flessibile |
| 170 | 50986300 | 0,22m | PVC-Schlauch transp. 5x1,5 | hose | tuyau | tubo flessibile |
| 180 | 21600000 | 1 | Schwimmerball | swim ball | ballon flottant | palla galleggiante |
| 190 | 20217200 | 2 | Schlauchschelle 9/W4 16-27 | hose clamp | collier | fascetta tubo |
| 200 | 20596500 | 1 | Schlauchklemme D17-18,5 | hose clamp | collier | fascetta tubo flessib. |
| 210 | 51297100 | 0,595 | Leitungsführungskanal | Line routing duct | goulotte d'acheminement | Canalina di instradamento |
| 220 | 21726700 | 1 | Endkappe | end cap | embout | Tappo terminale |
| 230 | 70074202 | 2 | Aufkleber columbus gross | label | autocollant | etichetta |
| 240 | 21720100 | 1 | Gummiwand | rubber wall | mur caoutchouc | parete in gomma |
| 250 | 20186600 | 2 | Rosette D5,3x3,2 Al | rosette | rosette | rosetta |
| 260 | 20278000 | 2 | Linsenschraube M5x12 | lens screw | vis à tête bombée | vite a testa lenticolare |
| 270 | 20152000 | 1 | Zylinderschraube M8x16 | cylindrical-head screw | vis cylindrique | vite a testa cilindrica |
| 280 | 20076700 | 2 | Zylinderschraube M8x20 | cylindrical-head screw | vis cylindrique | vite a testa cilindrica |
| 290 | 20002800 | 2 | Senkschraube M5x12 | countersunk screw | vis à tête noyée | vite a testa s sata |
| 300 | 21707500 | 2 | Senkschraube M8x70 | countersunk screw | vis à tête noyée | vite a testa s sata |
| 310 | 20048300 | 7 | Blechschr.Li C 2,9x6,5 | screw | vis | vite |
| 320 | 20009600 | 2 | Scheibe 5,3 | washer | rondelle | rondella |
| 330 | 20633700 | 7 | Scheibe 8,4 | washer | rondelle | rondella |
| 340 | 70083200 | 2 | Aufkleber max.40°C | abel | autocollant | etichett a |

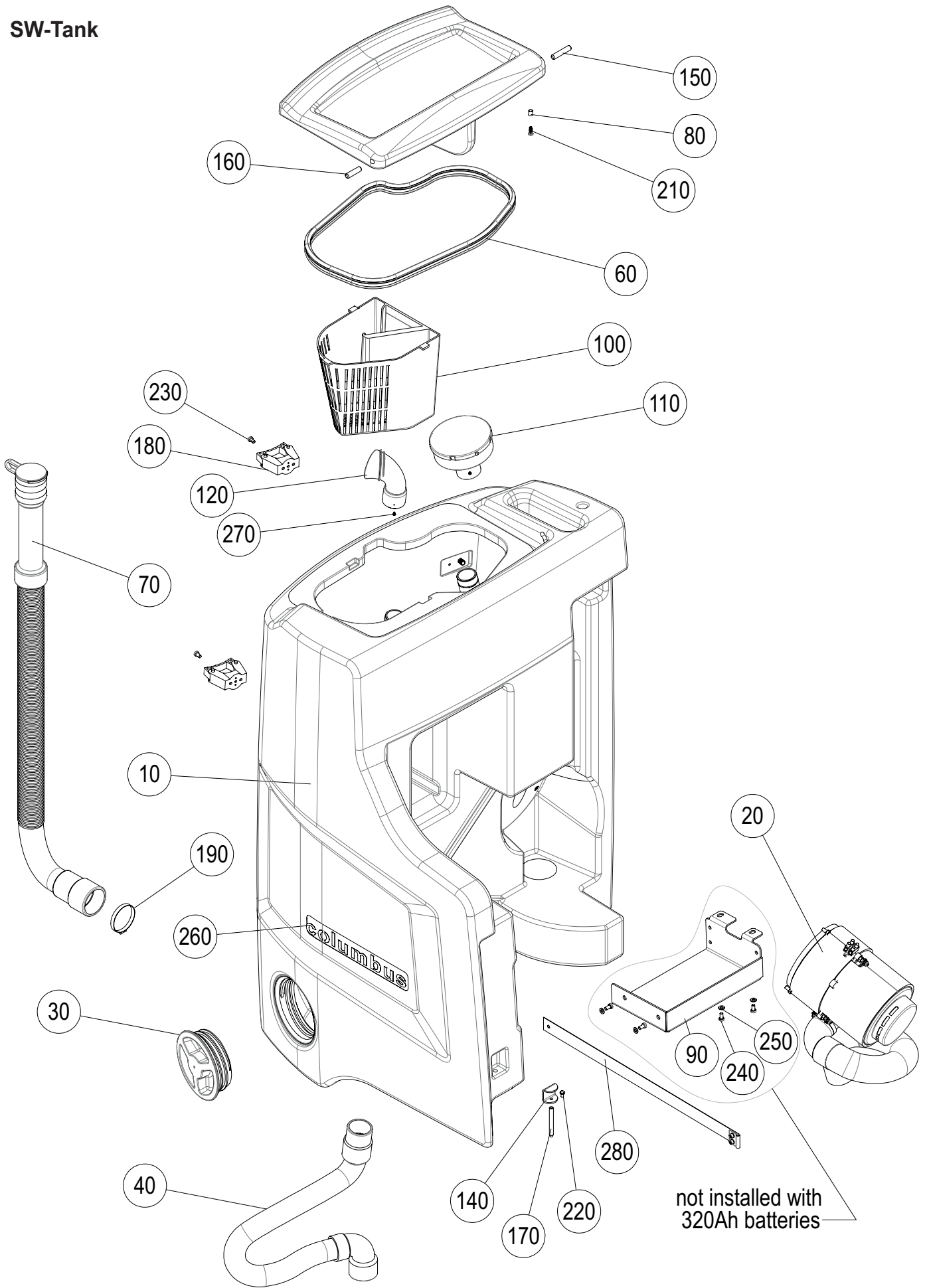
Lenkrad mit Lenkstange



Lenkrad mit Stange

| Pos. | Art.Nr. | Stück | Bezeichnung | Description | Designation | Descrizione |
|------|----------|-------|---------------------------|------------------------|--------------------|-------------------------|
| 10 | 21689800 | 1 | Lenkstange | steering rod | bielle | asta di guida |
| 20 | 21171400 | 2 | Distanzstück | spacer | entretoise | distanziale |
| 30 | 21728200 | 1 | Blende | cover | couverture | couverture |
| 40 | 70116701 | 1 | Aufkleber für Lenkrad D36 | sticker | autocollant | adesivo |
| 50 | 21385600 | 1 | Lenkrad D350 | steering wheel | volante | volate di guida |
| 60 | 20666700 | 1 | Lenkbuchse PA | sleeve | douille | boccola |
| 70 | 21261100 | 1 | Hülse PA | sleeve | douille | boccola |
| 80 | 20093300 | 1 | O-Ring 22x3 | O-ring | joint rond | anello di tenuta |
| 90 | 20816200 | 3 | Schraube KA 50x16 EJ schw | screw | vis | vite |
| 100 | 20666900 | 1 | Passfeder 5x5x16 | feather key | ressort d'ajustage | linguetta di aggiust. |
| 110 | 20013200 | 2 | Zylinderschraube M5x25 | cylindrical-head screw | vis cylindrique | vite a testa cilindrica |
| 120 | 20152000 | 1 | Zylinderschraube M8x16 | cylindrical-head screw | vis cylindrique | vite a testa cilindrica |
| 130 | 20009600 | 2 | Scheibe 5,3 | washer | rondelle | rondella |
| 140 | 20633700 | 1 | Scheibe 8,4 | washer | rondelle | rondella |

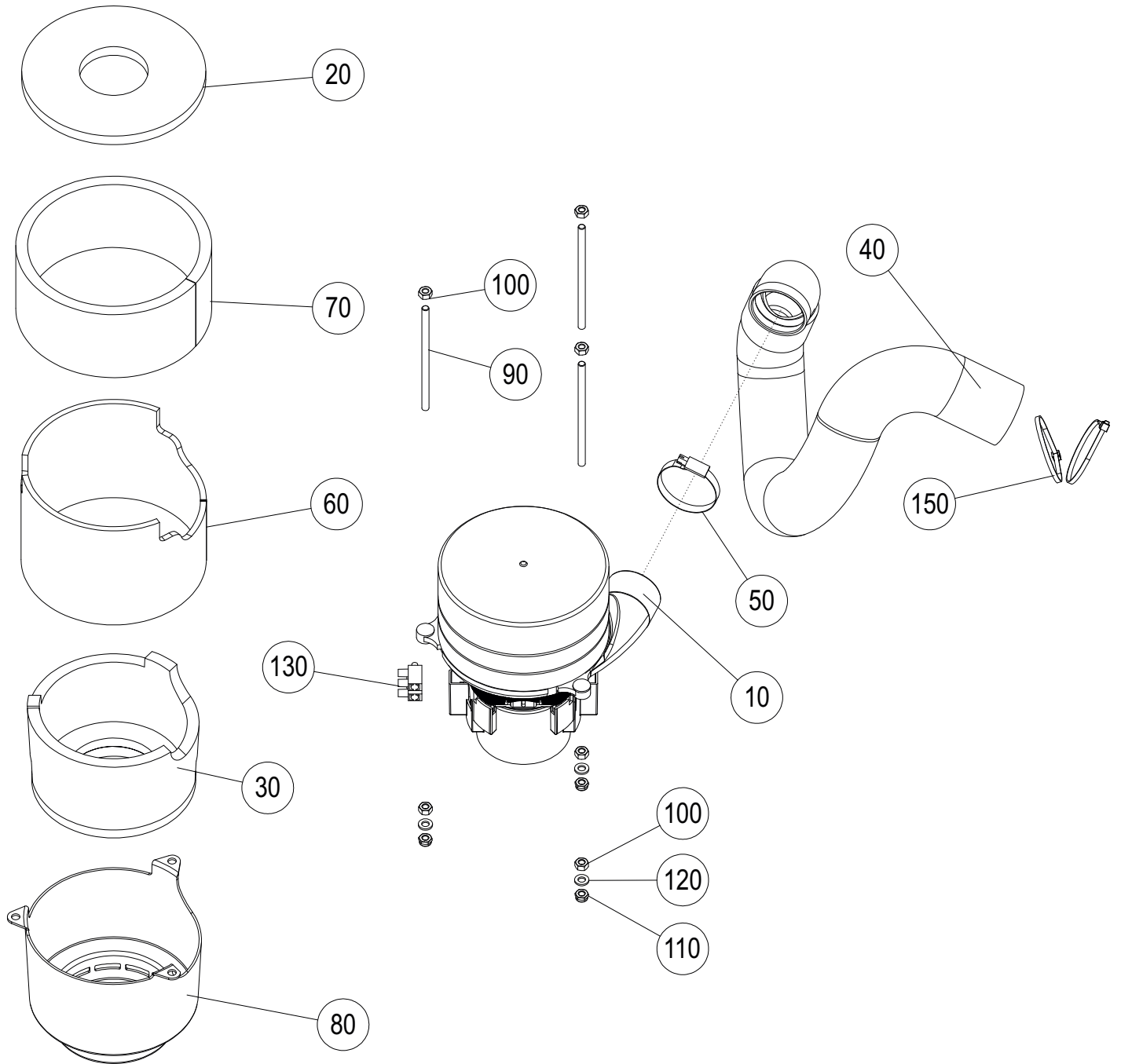
SW-Tank



SW-Tank

| Pos. | Art.Nr. | Stück | Bezeichnung | Description | Designation | Descrizione |
|------|----------|-------|----------------------------|------------------------|---------------------------|------------------------------|
| 10 | 21686700 | 1 | SW-Tank ARA140 | recovery tank | réservoir de récupération | serbatoio soluzione recup. |
| 20 | 21708780 | 1 | Saugereinheit ARA140 kpl | suction unit | unité d'aspiration | unità di aspirazione |
| 30 | 21368300 | 1 | Tankschraubdeckel m.O-Ring | screwed lid | couvercle vissée | coperchio filettato |
| 40 | 21525600 | 1 | Saugschlauch NW38 | suction hose | flexible d'aspiration | tubo aspirazione |
| 50 | 21461000 | 1 | SW-Deckel | tank cover | couvercle réservoir | coperchio serbatoio |
| 60 | 50798500 | 1,1m | Dichtprofil | band sealer | joint | profilato di tenuta |
| 70 | 21526000 | 1 | SW-Ablaufschlauch PU | drain hose | tuyau de vidange | tubo scarico |
| 80 | 20938300 | 1 | Distanzstück | distancer | espaceur | distanziale |
| 90 | 21753100 | 1 | Kanisterplatte | container support | support bidon | supporto bidone |
| 100 | 21174100 | 1 | Grobschmutzkorb | waste container | vano di raccolta | vano di raccolta |
| 110 | 21058835 | 1 | Prefilter und Schwimmer | prefilter-floater | préfiltre-floteur | prefiltro-galleggiante |
| 120 | 21174000 | 1 | Fitting | fitting | racord | adattamento |
| 130 | 20798201 | 1 | Halterung f.Schlauch | support | support pour util | supporto utensile |
| 140 | 21600300 | 1 | Schieber vorne | slider | glissière | slider |
| 150 | 20978401 | 1 | Deckelbolzen L50 | bolt | boulon | bullone |
| 160 | 20978400 | 1 | Deckelbolzen L39 | bolt | boulon | bullone |
| 170 | 21600200 | 1 | Riegel vorne | bar | barre | barra |
| 180 | 20557700 | 2 | Toolflex-Halterung 20-30mm | tool holder | support pour util | spporto utensile |
| 190 | 21373200 | 1 | Schlauchschelle 9 | hose clamp | collier | fascetta per tubi flessibili |
| 200 | 20279800 | 2 | Blechschr.LiSenk C3,5x19 | screw | vis | vite |
| 210 | 20816200 | 1 | Schraube KA 50x16 EJ schw | screw | vis | vite |
| 220 | 20006400 | 1 | 6-Kantschraube M5x8 | hex.head screw | vis à tête hex. | vite a testa esag. |
| 230 | 20193000 | 2 | Zylinderschraube M6x10 | cylindrical-head screw | vis cylindrique | vite a testa cilindrica |
| 240 | 20151900 | 4 | Zylinderschraube M6x12 | cylindrical-head screw | vis cylindrique | vite a testa cilindrica |
| 250 | 20000700 | 4 | Scheibe 6,4 | washer | rondelle | rondella |
| 260 | 70074202 | 1 | Aufkleber columbus gross | label | autocollant | etichetta |
| 270 | 20048300 | 1 | Blechschr.Li C 2,9x6,5 | screw | vis | vite |
| 280 | 21752980 | 1 | Gurtband kpl | textile tape cpl. | bande textile cpl. | fascia tessile cpl. |

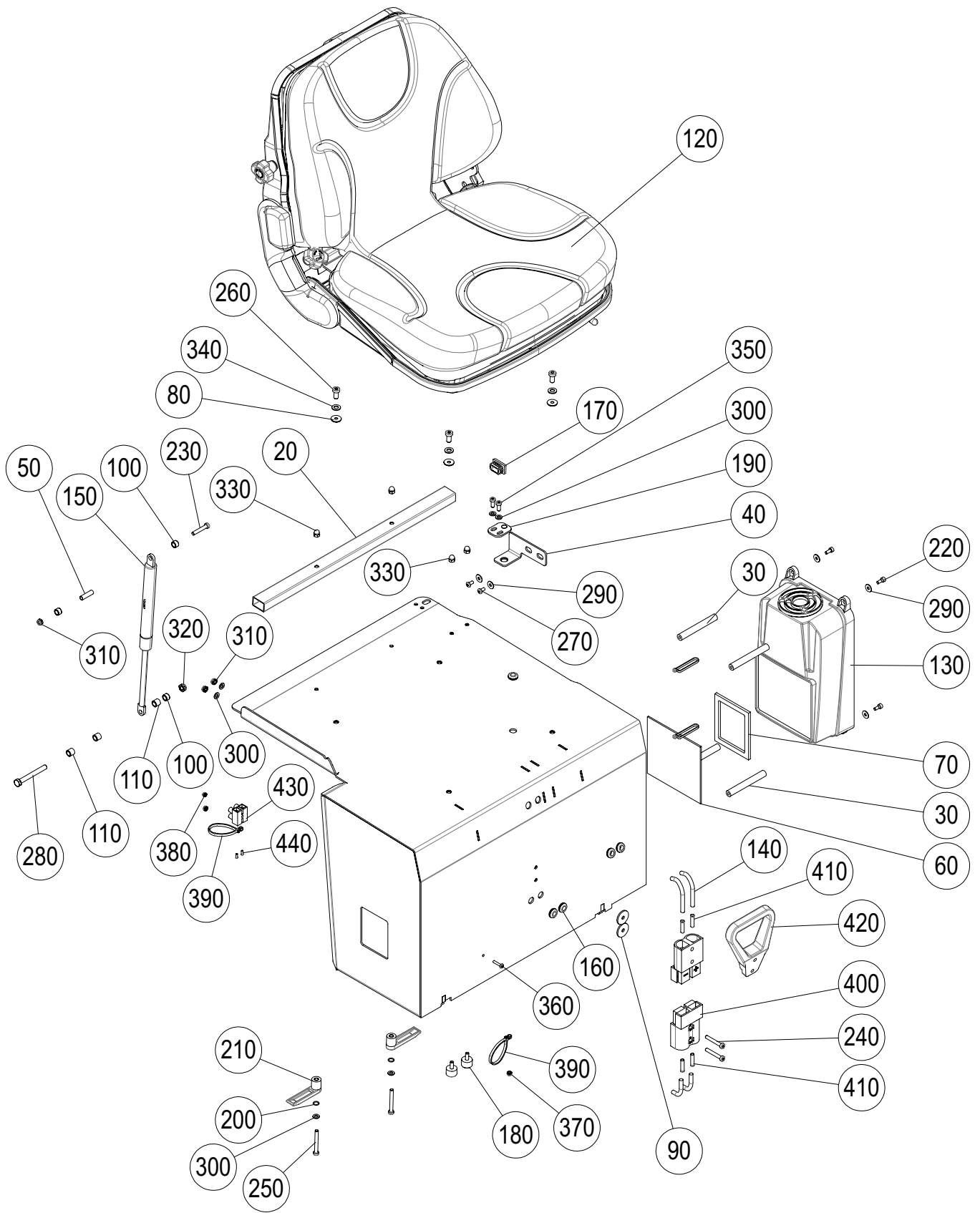
Saugereinheit



Saugeinheit

| Pos. | Art.Nr. | Stück | Bezeichnung | Description | Designation | Descrizione |
|------|----------|-------|--------------------------------------|---------------------------------|----------------------------|------------------------|
| 10 | 20543430 | 1 | Saugmotor 24V 540W Ersatz | suction motor | moteur d'aspiration | motore aspirazione |
| 20 | 20808600 | 1 | Dichtscheibe D155 | sealing washer | rondelle d'étanchéité | Rondella di tenuta |
| 30 | 20937780 | 1 | Schalldämmung | sound insulation | amortisseur de bruit | silenziatore |
| 40 | 21526800 | 1 | Schalldämmschlauch | sound insulation | amortisseur de bruit | isolamento acustico |
| 50 | 20219700 | 1 | Schlauchschelle 35-50 | hose clamp | support pour tuyau | fascetta tubo flessib. |
| 60 | 21464400 | 1 | Schalldämmring dünn | sound insulation | amortisseur de bruit | silenziatore |
| 70 | 21262601 | 1 | Schalldämmring silent | sound insulation | amortisseur de bruit | silenziatore |
| 80 | 20937600 | 1 | Schalldämmhaube | cap for sound insulation silent | chape d'amortisseur silent | cappello silenziatore |
| 90 | 20958201 | 3 | Gewindestange M6x120 | screwed bar | Tige filetée | asta filettata |
| 100 | 20002000 | 6 | 6-Kantmutter M6 | hex.nut | écrou hexagonal | dado esagonale |
| 110 | 20070000 | 3 | 6-Kantmutter M 6 stop | hex.nut | écrou hexagonal | dado esagonale |
| 120 | 20000700 | 3 | Scheibe 6,4 | washer | rondelle | rondella |
| 130 | 20409200 | 1 | Klemmleiste 2-polig 4mm ² | clamping bar | bornier | morsettiera |
| 150 | 20161300 | 3 | Kabelbinder TY 242 M | cable strip | attache rapide | strip cavo |

Sitz kpl.



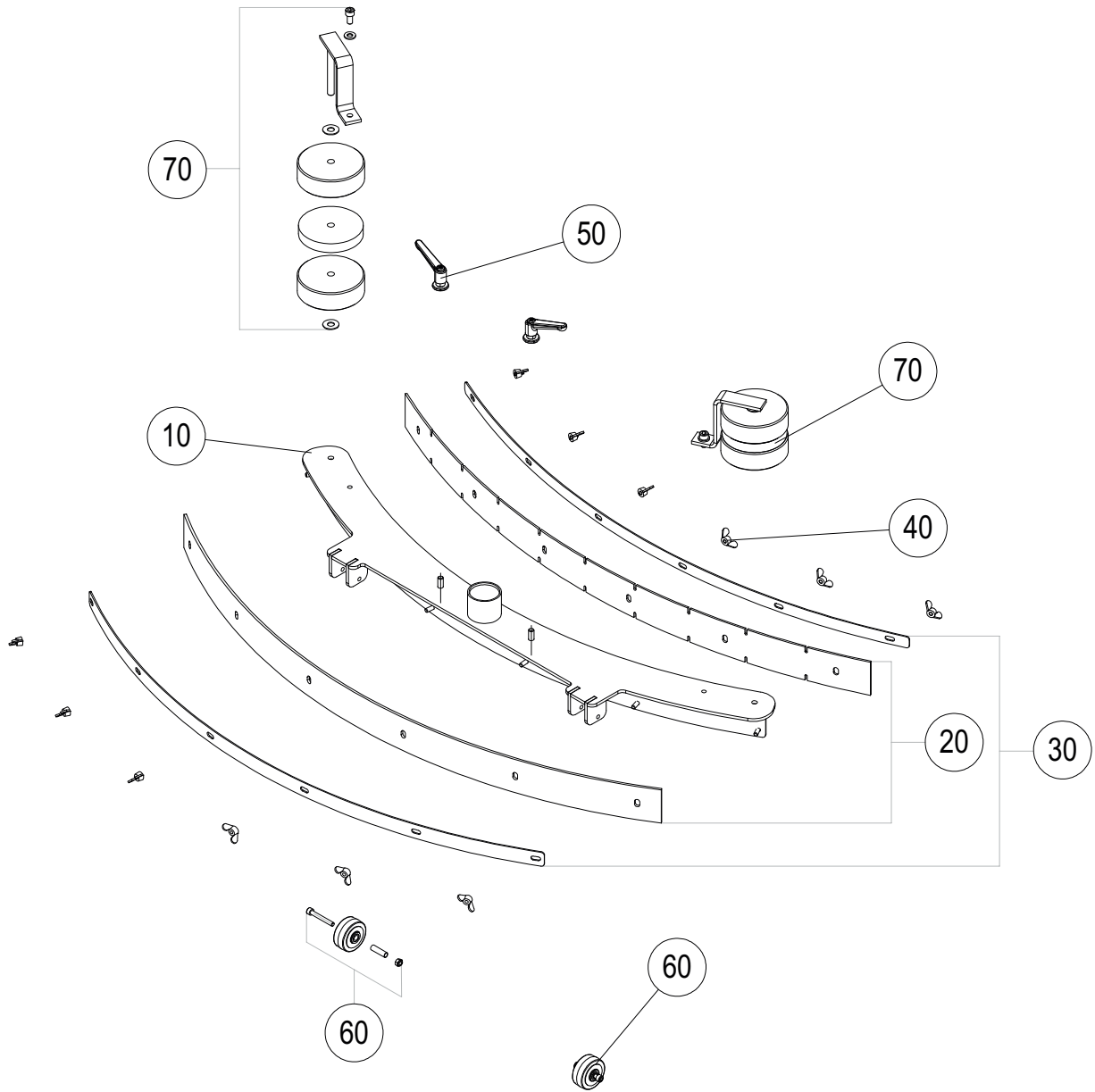
Sitz kpl.

| Pos. | Art.Nr. | Stück | Bezeichnung | Description | Designation | Descrizione |
|------|----------|-------|--|--|---|---|
| 10 | 21689600 | 1 | Sitzblech | seat plate | panneau siège | pannello sede |
| 20 | 21689700 | 1 | Rechteckrohr | rectangular tube | tube rectangulaire | tubo rettangolare |
| 30 | 21542900 | 4 | Stehbolzen | stud bolt | boulon | bullone |
| 40 | 21718500 | 1 | Befestigungswinkel | mounting bracket | support de montage | staffa di montaggio |
| 50 | 20442403 | 1 | Hülse f.Gummirolle L=28 | spacer | douille d'écartement | distanziale |
| 60 | 21543200 | 1 | Sichtfenster flexibel | transparent cover | couverture transparente | copertura trasparente |
| 70 | 21543300 | 1 | Dichtung | gasket | rondelle | guarnizione |
| 80 | 20896700 | 4 | Dichtscheibe 8,5x19x1-3 | sealing washer | rondelle | rondella |
| 90 | 20191100 | 2 | Scheibe 6,5x28x2,5 | washer | rondelle | rondella |
| 100 | 20619900 | 3 | Distanzbuchse D12/d8,0x7,5 | distance bush | manchon d'espacement | distanziale |
| 110 | 21528400 | 3 | Distanzbuchse 8x12x11 | distance bush | manchon d'espacement | distanziale |
| 120 | 21732200 | 1 | Fahrersitz | seat | siège conducteur | sedile |
| 130 | 21730280 | 1 | Ladegerät | batterie charger | Chargeur | caricabatteria |
| | 21730281 | 1 | Ladegerät (mit 3-pol Stecker Australien) | batterie charger (with 3-pin plug Australia) | Chargeur (avec prise à 3 broches Australie) | caricabatteria (con connettore a 3 pin Australia) |
| 140 | 21726600 | 1 | Batterieanschlusskabel | battery connection cable | cavo di collegamento | câble de connexion |
| 150 | 21719600 | 1 | Gasfeder | spring | ressort | molla |
| 160 | 20067300 | 5 | Kabeldurchführungsring | grommet | Buchon pour cable | passacavo |
| 170 | 21695900 | 1 | Stopfen | stopper | Bouchon | tappo |
| 180 | 21171100 | 2 | Gummi-Metall-Puffer | bumper | Tampon | tampone |
| 190 | 21747900 | 1 | Verriegelungsbolzen | plate with bolt | plaque boulon | piastra bullone |
| 200 | 20930900 | 2 | O-Ring 8,5x1,5 | O-ring | joint rond | anello di tenuta |
| 210 | 20319600 | 2 | Kabelhaken | cable hook | crochet pour câble | gancio |
| 220 | 20149200 | 4 | Zylinderschraube M5x12 VA | cylindrical-head screw | vis cylindrique | vite a testa cilindrica |
| 230 | 20831600 | 1 | Zylinderschraube M6x35 VA | cylindrical-head screw | vis cylindrique | vite a testa cilindrica |
| 240 | 20030000 | 2 | Zylinderschraube M6x40 VA | cylindrical-head screw | vis cylindrique | vite a testa cilindrica |
| 250 | 20114300 | 2 | Zylinderschraube M6x50 VA | cylindrical-head screw | vis cylindrique | vite a testa cilindrica |
| 260 | 20152000 | 4 | Zylinderschraube M8x16 VA | cylindrical-head screw | vis cylindrique | vite a testa cilindrica |
| 270 | 20006500 | 2 | Linsenschraube M5x10 VA | lens screw | vis à tête bombée | vite a testa lenticolare |
| 280 | 20813400 | 1 | 6-Kantschraube M8x70 vz | hex.head screw | vis à tête hex. | vite a testa esagonale |
| 290 | 20183000 | 6 | Scheibe 5,3 VA | washer | rondelle | rondella |
| 300 | 20000700 | 6 | Scheibe 6,4 VA | washer | rondelle | rondella |
| 310 | 20070000 | 3 | 6-Kantmutter M 6 stop | hex.nut | écrou hexagonal | dado esagonale |
| 320 | 20280500 | 1 | 6-Kantmutter M8 stop MOQ10 | hex.nut | écrou hexagonal | dado esagonale |
| 330 | 20149300 | 4 | Hutmutter M6 vz | cap nut | écrou | dado a cappello |
| 340 | 20067600 | 4 | Scheibe 8,4x16,0x1,6 VA | washer | rondelle | rondella |
| 350 | 20567500 | 2 | Zylinderschraube M 6x14 VA | cylindrical-head screw | vis cylindrique | vite a testa cilindrica |
| 360 | 21157300 | 1 | Linsenschraube M4x20 VA | lens screw | vis à tête bombée | vite a testa lenticolare |
| 370 | 20280600 | 2 | 6-Kantmutter M 5 stop VA | hex.nut | écrou hexagonal | dado esagonale |

Sitz kpl.

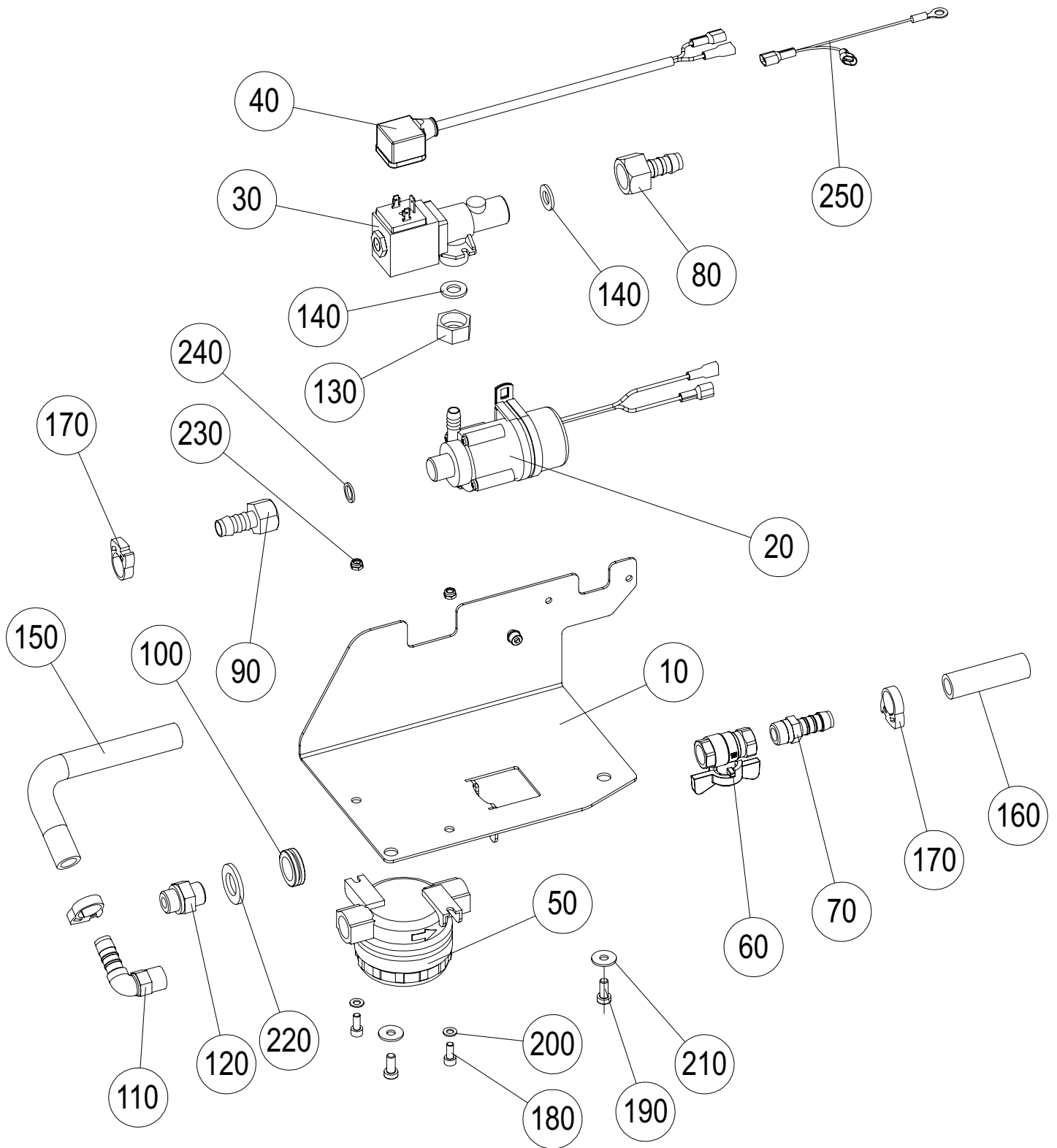
| Pos. | Art.Nr. | Stück | Bezeichnung | Description | Designation | Descrizione |
|-------------|----------------|--------------|---------------------------------------|--------------------|--------------------|--------------------|
| 380 | 20007101 | 1 | 6-Kantmutter M 4 stop VA | hex.nut | écrou hexagonal | dado esagonale |
| 390 | 20135800 | 2 | Kabelbinder TY 35 M | cable strip | attache rapide | strip cavo |
| 400 | 20218701 | 2 | Ladestecker SR175+Kontakte | charging plug | prise de charge | spina di ricarica |
| 410 | 21746700 | 4 | Aderendhülse 16mm ² x 25mm | ferrule | embouts terminaux | Capicorda |
| 420 | 20643000 | 1 | Handgriff SB175 ger.rot | handle | poignée | maniglia |
| 430 | 20294504 | 1 | Klemmleiste 2-polig | clamping strip | borne de jonction | presa |
| 440 | 21075100 | 2 | Aderendhülse blank 4mm ² | ferrule | embouts terminaux | Capicorda |

Gerätedüse 66 kpl.



| Pos. | Art.Nr. | Stück | Bezeichnung | Description | Designation | Descrizione |
|------|----------|-------|-----------------------------------|-------------------------------|----------------------------|-----------------------------|
| | 20623731 | | Gerätedüse kpl. 66 | Squeegee tool cpl. 66 | Buse d'aspiration compl.66 | bocchetta compl. 66 |
| 10 | 20618902 | 1 | Gerätedüse 66 | squeegee tool 66 | Buse d'aspiration 66 | bocchetta 66 |
| 20 | 20620031 | 1 | Sauglippen Satz 66 | squeegee blades set 66 | Set raclette 66 | set lamelle 66 |
| | 21668730 | | Sauglippen Satz 66 ölbeständig | squeegee blades set 66 | Set raclette 66 | set lamelle 66 |
| 30 | 20620230 | 1 | Klemmleiste Satz 66 | clamping strip set 66 | Fixation (set) 66 | set piattina bloccagomma 66 |
| 40 | 20623130 | 1 | Flügelmutter Set (12 Stück) | nut set (12 pieces) | Ecrou (set-12 pieces) | set dado a farfalla |
| 50 | 21636230 | 1 | Klemmhebel Set (2 Stück) | clamping lever set (2 pieces) | Levier pour fixation (set) | set lavetta di fissaggio |
| 60 | 20442433 | 2 | Gummirolle | guide roll | Rouleau d'appui | ruota |
| 70 | 20621430 | 2 | Abweisrolle hoch BG | high protecting caster assy | Roulette de protection | ruota di protezione |

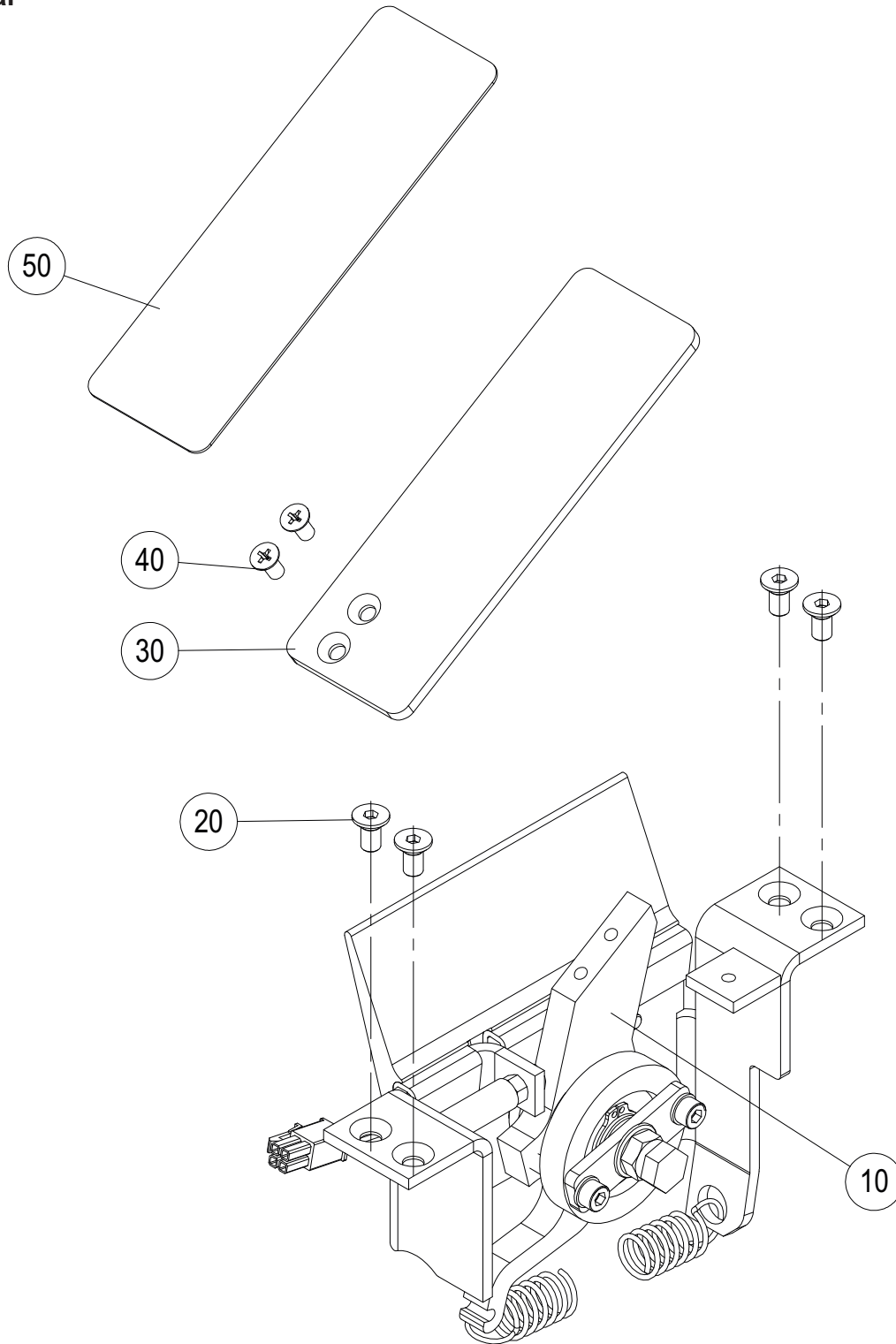
Wasserführung



Wasserführung

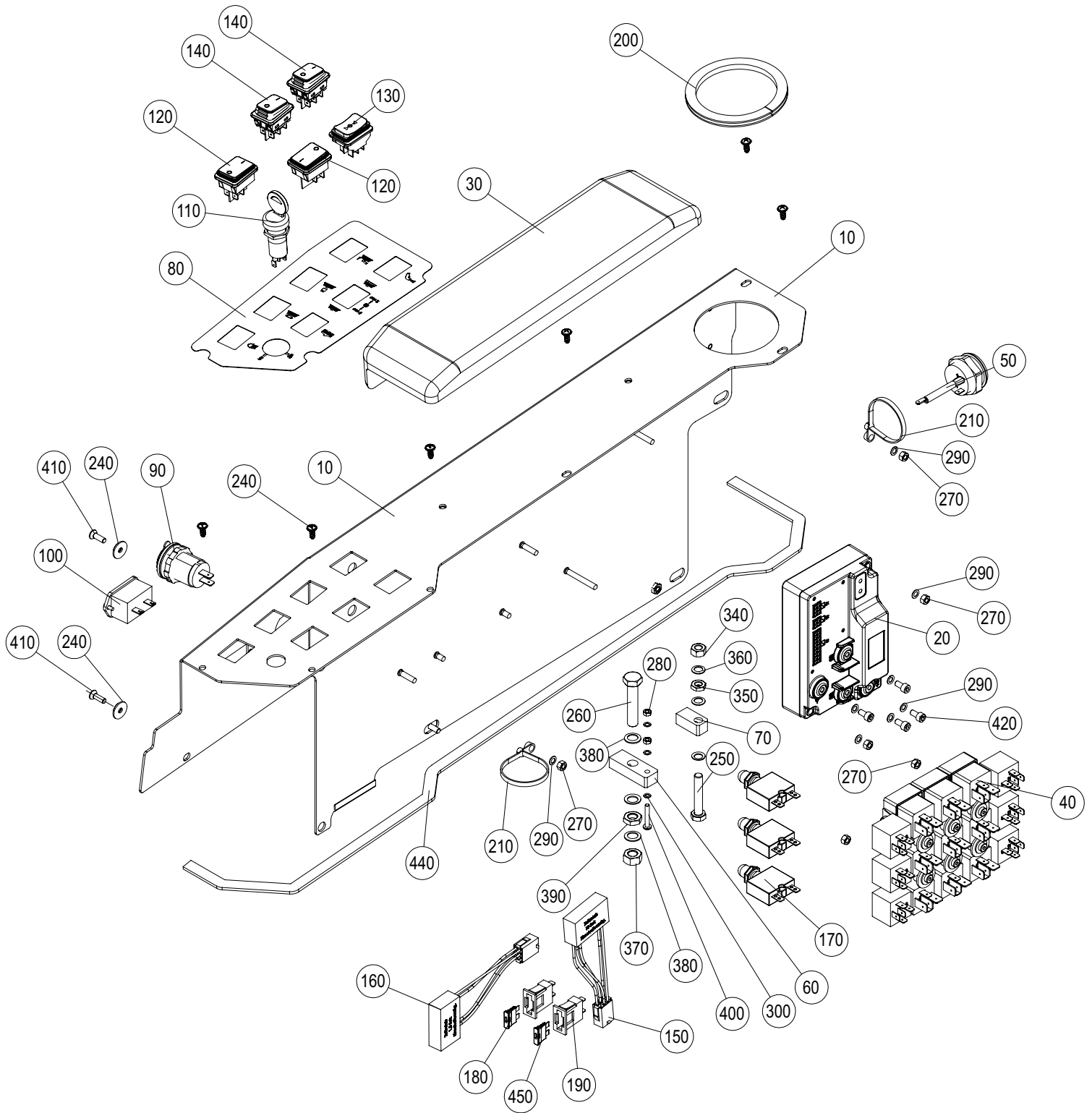
| Pos. | Art.Nr. | Stück | Bezeichnung | Description | Designation | Descrizione |
|------------|-----------|-------|-----------------------------|------------------------|----------------------------|---------------------------|
| | 217088830 | 1 | Wasserführung kpl. | Squeegee tool cpl. 66 | Buse d'aspiration compl.66 | bocchetta compl. 66 |
| 10 | 21690800 | 1 | Hallteblech Wasserführung | plate | panneau | pannello |
| 20 | 21750580 | 1 | FW-Pumpe mit Halter | fresh water pump | pompe eau propre | pompa |
| 30 | 21055000 | 1 | Magnetventil | magnetic valve | rlctrovalve | elettrovalvola |
| 40 | 21750480 | 1 | Gerätestecker Magnetv. | appliance plug | prise | spina elettrovalvola |
| 50 | 20760700 | 1 | Filter Inline 3/8" Innengew | filter | filtre | filtro |
| 60 | 21660400 | 1 | Kugelhahn 3/8" | ball valve | robinet à bille | robinetto |
| 70 | 20681400 | 1 | Schlauchtülle 3/8" | hose nozzle | embout de tuyau | beccuccio tubo flessib. |
| 80 | 21061100 | 1 | Gewindetülle | nozzle | tubulure filetée | beccuccio |
| 90 | 21246700 | 1 | Gewindetülle | nozzle | tubulure filetée | beccuccio |
| 100 | 20931000 | 1 | Durchführungstülle | gasket | garniture | guarnizione |
| 110 | 20671000 | 1 | Winkel-Einschraubstutzen | hose nozzle | tubulure équerre filetée | beccuccio tubo flessibile |
| 120 | 20105800 | 1 | Doppelgewindenippel | threaded nipple | raccord filetée | raccordo filettato |
| 130 | 21073200 | 1 | 6-Kantmutter G1/2" | hex.nut | écrou hexagonal | dado |
| 140 | 21073600 | 2 | Dichtring 19/10x2 | sealing ring | rondelle d'étanchéité | guarnizione |
| 150 | 50020600 | 0,18m | Schlauch Drahtspir. Ø13x3 | hose | tuyau | tubo flessibile |
| 160 | 50680800 | 0,07m | Schlauch 12,5x3 | hose | tuyau | tubo flessibile |
| 170 | 20596500 | 3 | Schlauchklemme D17-18,5 | hose clamp | collier | fascetta tubo flessib. |
| 180 | 20149200 | 3 | Zylinderschraube M5x12 VA | cylindrical-head screw | Vis cylindrique | vite a testa cilindrica |
| 190 | 20567500 | 2 | Zylinderschraube M 6x14 VA | cylindrical-head screw | Vis cylindrique | vite a testa cilindrica |
| 200 | 20009600 | 3 | Scheibe 5,3 vz | washer | rondelle | rondella |
| 210 | 20113000 | 2 | Scheibe 6,4 VA | washer | rondelle | rondella |
| 220 | 20627500 | 1 | Scheibe 17,0x30,0x3,0 PA | washer | rondelle | rondella |
| 230 | 20280600 | 3 | 6-Kantmutter M 5 stop VA | hex.nut | écrou hexagonal | dado esagonale |
| 240 | 20107300 | 1 | Dichtung | sealing ring | rondelle d'étanchéité | guarnizione |
| 250 | 21750300 | 1 | Kabel | cable | câble | cavo |

Gaspedal



| Pos. | Art.Nr. | Stück | Bezeichnung | Description | Designation | Descrizione |
|------|----------|-------|--------------------|-------------------|--------------------------|----------------------|
| 10 | 21754730 | 1 | Gaspedal ARA140 | accelerator | Accélérateur | acceleratore |
| 20 | 20636900 | 4 | Senkschraube M6x12 | countersunk screw | vis à tête noyée | vite a testa svasata |
| 30 | 20973300 | 1 | Platte Gaspedal | accelerator plate | Plaque pour accélérateur | piastra |
| 40 | 20086500 | 2 | Senkschraube M5x16 | countersunk screw | vis à tête noyée | vite a testa svasata |
| 50 | 20771100 | 1 | Sandpapier | sand paper | Papier sablé | crtà vetrata |

Elektrik Basis



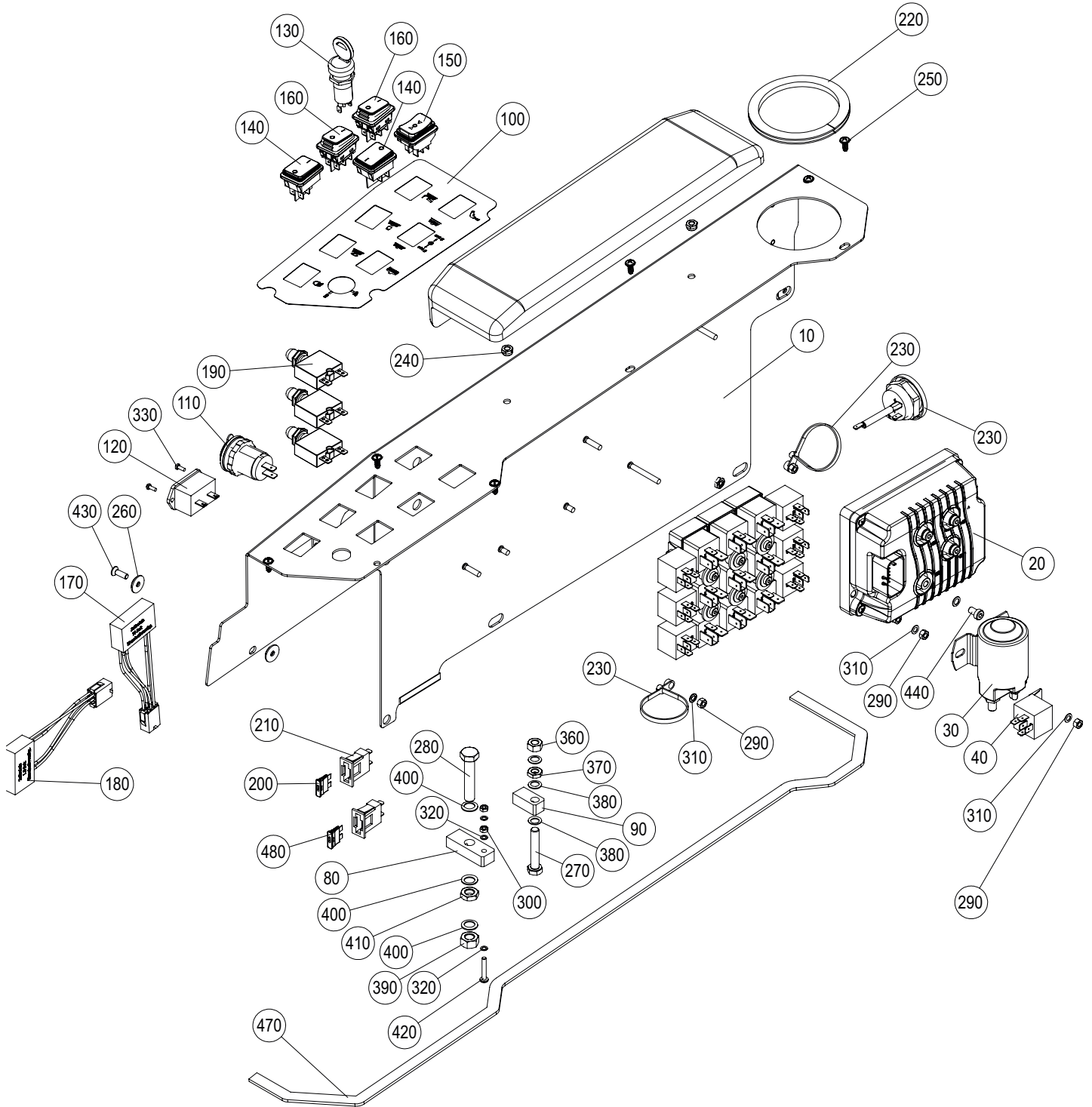
Elektrik Basis

| Pos. | Art.Nr. | Stück | Bezeichnung | Description | Designation | Descrizione |
|------|----------|-------|---------------------------------------|------------------------|---------------------------------|----------------------------|
| 10 | 21693300 | 1 | Elektroblech | | | |
| 20 | 21606002 | 1 | Steuerung voreingestellt | driving control device | Commande électronique de marche | comando elettronico marcia |
| 30 | 21716900 | 1 | Armlehne | armrest | accoudoir | bracciolo |
| 40 | 21730380 | 1 | Relaisblock | relay block | bloc relais | blocco relè |
| 50 | 21619300 | 1 | Piezo-Buzzer mit Vorwiderstand | horn with resistor | Claxon avec résistance | clacson con resistenza |
| 60 | 21247401 | 1 | Polklemme plus | binding post plus | borne polaire plus | morsetto plus |
| 70 | 20997501 | 1 | Polklemme minus | binding post | Pôle négatif | morsetto negativo |
| 80 | 71013600 | 1 | Aufkleber Elektroblech | label | Autocollant | etichetta |
| 90 | 21568200 | 1 | USB-Einbaubuchse | USB port | port USB | porta USB |
| 100 | 21168200 | 1 | Betriebsstundenzähler | hour counter digit | compteur | contatore |
| 110 | 20632500 | 1 | Schlüsselschalter | main switch | interrupteur principal | interruttore principale |
| 120 | 20892400 | 2 | Wippschalter | switch | Interrupteur | interruttore |
| 130 | 21064201 | 1 | Wipptaster mit Schutzkappe | switch | interrupteur | interruttore |
| 140 | 21725100 | 2 | Wippschalter m.Schutzkappe | switch | interrupteur | interruttore |
| 150 | 21078031 | 1 | Zeitrelais-Einschaltverzöger. 10 sec | timing relay | Relais | relè con timer |
| 160 | 21078030 | 1 | Zeitrelais-Einschaltverzöger. 1,5 sec | timing relay | Relais | relè con timer |
| 170 | 20202401 | 3 | Überstromschutzschalter | fuse | Fusible | fusibile |
| 180 | 20659700 | 1 | Sicherung 3A | fuse 3A | Fusible 3A | fusibile 3A |
| 190 | 20982700 | 2 | Flachsicherungshalter | fuse-holder | Porte-fusible | portafusibile |
| 200 | 51171800 | 0,285 | Gummi U-Profil 10x6x3 | rubber U-profile | Profil U caoutchouc | Profilo U in gomma |
| 210 | 20976600 | 3 | Kabelbinder TY 1435 M | cable strip | Attache rapide | strip cavo |
| 220 | 20070000 | 2 | 6-Kantmutter M 6 stop | hex.nut | écrou hexagonal | dado esagonale |
| 230 | 20625300 | 6 | Schraube KA 50x12 EJ schw | screw | Vis | vite |
| 240 | 21154900 | 5 | Rosettenring 5,3 schw. | washer | Rondelle | rondella |
| 250 | 20191700 | 1 | 6-Kantschraube M 8x45 | hexagon screw | Vis à tête hex. | vite esagonale |
| 260 | 20141901 | 1 | 6-Kantschraube M10x50 | hexagon screw | Vis à tête hex. | vite esagonale |
| 270 | 20574300 | 6 | 6-Kantmutter M5 d | hex. nut | Ecrou hexagonal | dado esagonale |
| 280 | 20076300 | 2 | 6-Kantmutter M 4 | hex. nut | Ecrou hexagonal | dado esagonale |
| 290 | 20067400 | 8 | Sicherungsscheibe SMZ 5 | lock washer | Rondelle de sécurit. | anello d'arresto |
| 300 | 20060000 | 3 | Sicherungsscheibe SMZ 4 | lock washer | Rondelle de sécurit. | anello d'arresto |
| 310 | 20085600 | 2 | Linsenschraube M 3x 8 | lens screw | Vis à tête bombée | vite |
| 320 | 20165400 | 2 | Sicherungsscheibe SMZ 3 | lock washer | Rondelle de sécurit. | anello d'arresto |
| 330 | 20011500 | 2 | 6-Kantmutter M 3 | hex. nut | Ecrou hexagonal | dado esagonale |
| 340 | 20000500 | 1 | 6-Kantmutter M8 d | hex. nut | Ecrou hexagonal | dado esagonale |
| 350 | 20297300 | 1 | 6-Kantmutter M8 niedrig | hex. nut | Ecrou hexagonal | dado esagonale |
| 360 | 20005500 | 3 | Sicherungsscheibe SMZ 8 | lock washer | Rondelle de sécurit. | anello d'arresto |
| 370 | 20054400 | 1 | 6-Kantmutter M10 | hex. nut | Ecrou hexagonal | dado esagonale |
| 380 | 20045400 | 3 | Sicherungsscheibe SMZ10 | lock washer | Rondelle de sécurit. | anello d'arresto |
| 390 | 20626400 | 1 | 6-Kantmutter M10 flach d | hex. nut | Ecrou hexagonal | dado esagonale |
| 400 | 20069000 | 1 | Linsenschraube M 4x25 | lens screw | Vis à tête bombée | vite |
| 410 | 21039800 | 7 | Senkschraube M5x16 schw | countersunk M5x16 | Vis à tête noyée M5x16 | vite M5x16 |

Elektrik Basis

| Pos. | Art.Nr. | Stück | Bezeichnung | Description | Designation | Descrizione |
|------|----------|-------|------------------------|---------------------|-------------------|------------------|
| 420 | 20730900 | 4 | Zylinderschraube M5x10 | screw | Vis | vite |
| 430 | 51262700 | 0,055 | Metallklammerprofil | Metal clamp profile | profil de serrage | profilo morsetto |
| 440 | 50644901 | 0,95 | Zellgummi-Band 12x3,0 | seal | Joint | guarnizione |
| 450 | 21627500 | 1 | Sicherung 10A | fuse 10A | fusibile 10A | fusibile 10A |

Elektrik Basis Steigungskit



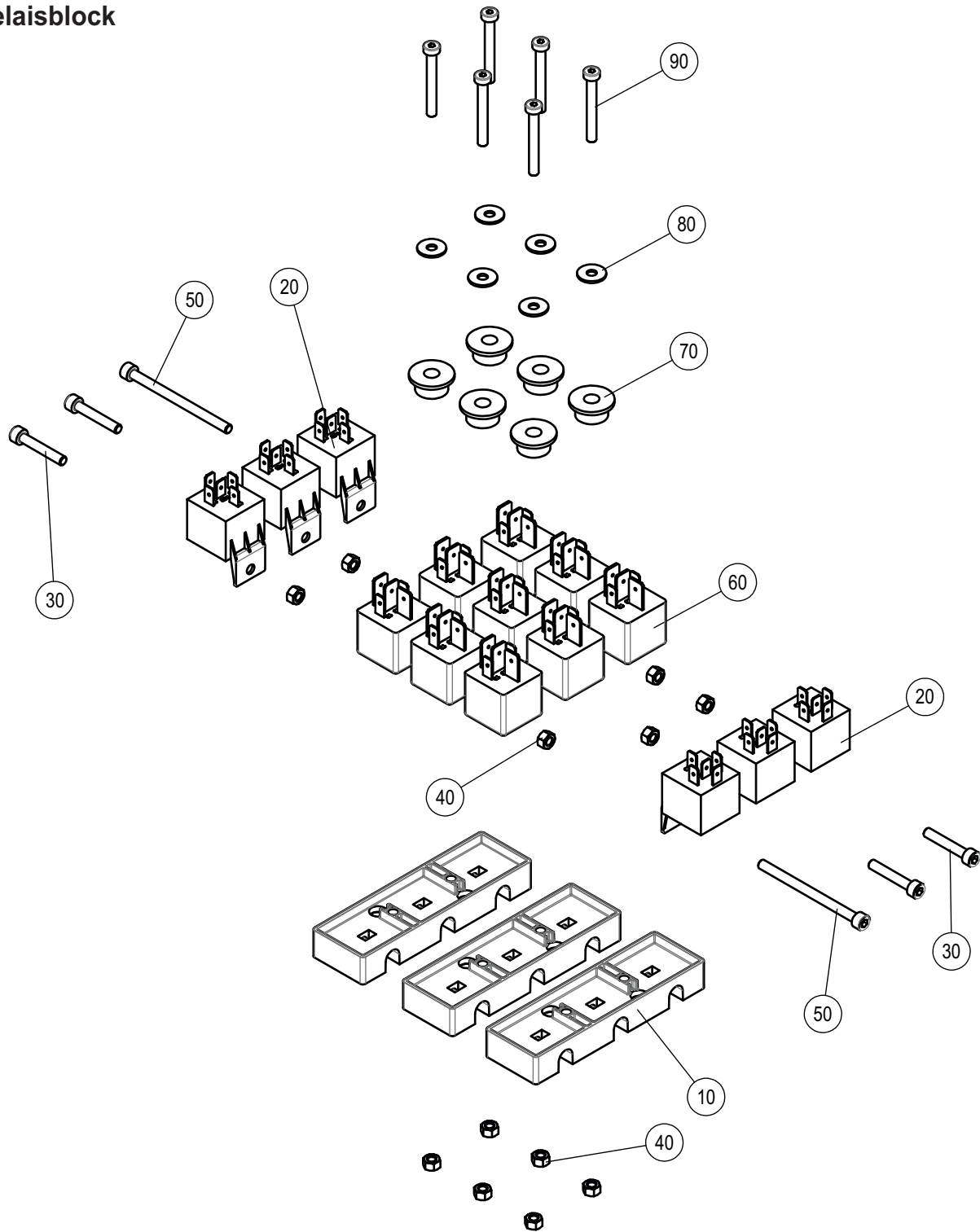
Elektrik Basis Steigungskit

| Pos. | Art.Nr. | Stück | Bezeichnung | Description | Designation | Descrizione |
|------|----------|-------|----------------------------|------------------------|---------------------------------|----------------------------|
| 10 | 21693300 | 1 | Elektroblech | electric plate | plaque électrique | piastra elettrica |
| 20 | 21760801 | 1 | Fahrsteuerung 24V 200A | driving control device | Commande électronique de marche | comando elettronico marcia |
| 30 | 21629000 | 1 | Schalterschütz NO 24V/150A | contactor | Contacteur | contattore |
| 40 | 21077100 | 1 | Relais m.Diode Wechsler | relay | relais | relè |
| 50 | 21716900 | 1 | Armlehne | armrest | accoudoir | bracciolo |
| 60 | 21730380 | 1 | Relaisblock | relay block | bloc relais | blocco relè |
| 70 | 21619380 | 1 | Piezo-Buzzer+Vorwiderstand | horn with resistor | Claxon avec résistance | clacson con resistenza |
| 80 | 21247401 | 1 | Polklemme plus | binding post plus | borne polaire plus | morsetto plus |
| 90 | 20997501 | 1 | Polklemme minus | binding post | Pôle négatif | morsetto negativo |
| 100 | 71013600 | 1 | Aufkleber Elektroblech | label | Autocollant | etichetta |
| 110 | 21568200 | 1 | USB-Einbaubuchse | USB port | port USB | porta USB |
| 120 | 21168200 | 1 | Betriebsstundenzähler | hour counter digit | compteur | contatore |
| 130 | 20632500 | 1 | Schlüsselschalter | main switch | interrupteur principal | interruttore principale |
| 140 | 20892400 | 2 | Wippschalter | switch | Interrupteur | interruttore |
| 150 | 21064201 | 1 | Wipptaster mit Schutzkappe | switch | interrupteur | interruttore |
| 160 | 21725100 | 2 | Wippschalter m.Schutzkappe | switch | interrupteur | interruttore |
| 170 | 21078031 | 1 | Zeitrelais 10Sek Verzöger. | timing relay | Relais | relè con timer |
| 180 | 21078030 | 1 | Zeitrelais-Einschaltverzög | timing relay | Relais | relè con timer |
| 190 | 20202401 | 3 | Überstromschutzschalter | fuse | Fusible | fusibile |
| 200 | 20659700 | 1 | Sicherung 3A | fuse 3A | Fusible 3A | fusibile 3A |
| 210 | 20982700 | 2 | Flachsicherungshalter | fuse-holder | Porte-fusible | portafusibile |
| 220 | 51171800 | 0,285 | Gummi U-Profil 10x6x3 | rubber U-profile | Profil U caoutchouc | Profilo U in gomma |
| 230 | 20976600 | 3 | Kabelbinder TY 1435 M | cable strip | Attache rapide | strip cavo |
| 240 | 20070000 | 2 | 6-Kantmutter M 6 stop | hex.nut | écrou hexagonal | dado esagonale |
| 250 | 20625300 | 6 | Schraube KA 50x12 EJ schw | screw | Vis | vite |
| 260 | 21154900 | 5 | Rosettenring 5,3 schw. | washer | Rondelle | rondella |
| 270 | 20191700 | 1 | 6-Kantschraube M 8x45 VA | hexagon screw | Vis à tête hex. | vite esagonale |
| 280 | 20141901 | 1 | 6-Kantschraube M10x50 VA | hexagon screw | Vis à tête hex. | vite esagonale |
| 290 | 20574300 | 9 | 6-Kantmutter M5 vzd | hex. nut | Écrou hexagonal | dado esagonale |
| 300 | 20076300 | 2 | 6-Kantmutter M 4 VA | hex. nut | Écrou hexagonal | dado esagonale |
| 310 | 20067400 | 8 | Sicherungsscheibe SMZ 5 vz | lock washer | Rondelle de sécurit. | anello d'arresto |
| 320 | 20060000 | 3 | Sicherungsscheibe SMZ 4 vz | lock washer | Rondelle de sécurit. | anello d'arresto |
| 330 | 20085600 | 2 | Linsenschraube M 3x 8 vz | lens screw | Vis à tête bombée | vite |
| 340 | 20165400 | 2 | Sicherungsscheibe SMZ 3 vz | lock washer | Rondelle de sécurit. | anello d'arresto |
| 350 | 20011500 | 2 | 6-Kantmutter M 3 vz | hex. nut | Écrou hexagonal | dado esagonale |
| 360 | 20000500 | 1 | 6-Kantmutter M8 vzd | hex. nut | Écrou hexagonal | dado esagonale |

Elektrik Basis Steigungskit

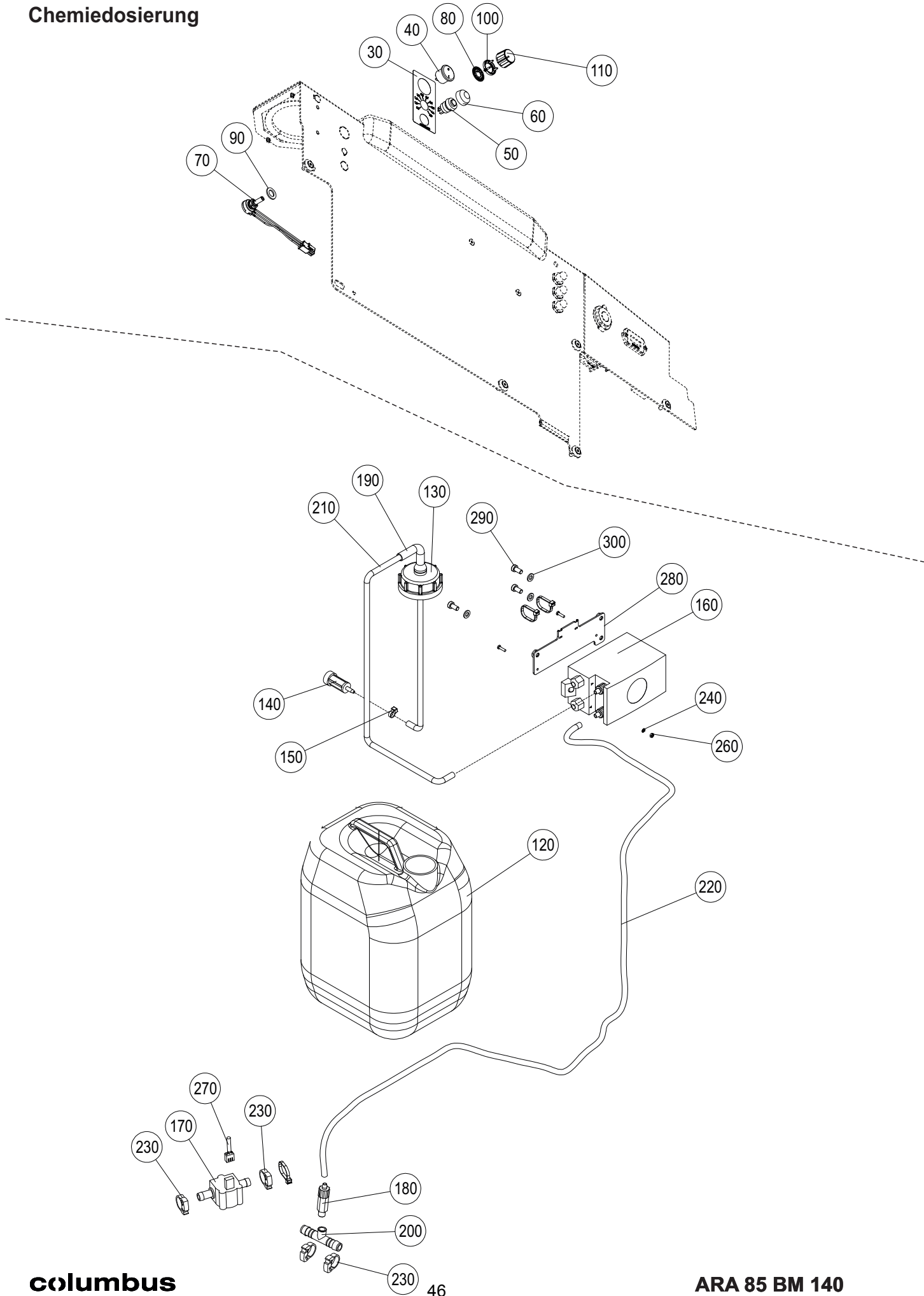
| Pos. | Art.Nr. | Stück | Bezeichnung | Description | Designation | Descrizione |
|------|----------|-------|----------------------------|---------------------|---------------------------|------------------|
| 370 | 20297300 | 1 | 6-Kantmutter M8 vz niedrig | hex. nut | Ecrou hexagonal | dado esagonale |
| 380 | 20005500 | 3 | Sicherungsscheibe SMZ 8 vz | lock washer | Rondelle de sécurit. | anello d'arresto |
| 390 | 20054400 | 1 | 6-Kantmutter M10 VA | hex. nut | Ecrou hexagonal | dado esagonale |
| 400 | 20045400 | 3 | Sicherungsscheibe SMZ10 vz | lock washer | Rondelle de sécurit. | anello d'arresto |
| 410 | 20626400 | 1 | 6-Kantmutter M10 flach vzd | hex. nut | Ecrou hexagonal | dado esagonale |
| 420 | 20069000 | 1 | Linsenschraube M 4x25 VA | lens screw | Vis à tête bombée | vite |
| 430 | 21039800 | 7 | Senkschraube M5x16 schw | countersunk M5x16 | Vis à tête noyée M5x16 | vite M5x16 |
| 440 | 20193000 | 4 | Zylinderschraube M6x10 vz | screw | Vis | vite |
| 450 | 20008000 | 4 | Sicherungsscheibe SMZ 6 vz | lock washer | Rondelle de sécurit. | anello d'arresto |
| 460 | 51262700 | 0,055 | Metallklammerprofil | Metal clamp profile | profil de serrage | profilo morsetto |
| 470 | 50644901 | 0,95 | Zellgummi-Band 12x3,0 | seal | Joint | guarnizione |
| 480 | 21627500 | 1 | Sicherung 10A | fuse 10A | fusibile 10A | fusibile 10A |

Relaisblock



| Pos. | Art.Nr. | Stück | Bezeichnung | Description | Designation | Descrizione |
|------|----------|-------|--------------------------|------------------|-----------------|-------------------------|
| 10 | 21155500 | 3 | Halter für Relais 3-fach | support relay | Support relais | supporto relé |
| 20 | 21077100 | 6 | Relais m.Diode Wechsler | relay | Relais | relé |
| 30 | 20224600 | 4 | Zylinderschraube M5x30 | screw | Vis cylindrique | vite a testa cilindrica |
| 40 | 20574300 | 12 | 6-Kantmutter M5 d | hex.nut | Ecrou | dado essag. |
| 50 | 20818500 | 2 | Zylinderschraube M5x70 | screw | Vis cylindrique | vite a testa cilindrica |
| 60 | 21077302 | 9 | Relais | relay | Relais | relé |
| 70 | 21450500 | 6 | Haltescheibe | retaining washer | Rondelle | rondella |
| 80 | 20183000 | 6 | Scheibe 5,3 | washer | Rondelle | rondella |
| 90 | 20037000 | 6 | Zylinderschraube M5x40 | screw | Vis cylindrique | vite a testa cilindrica |

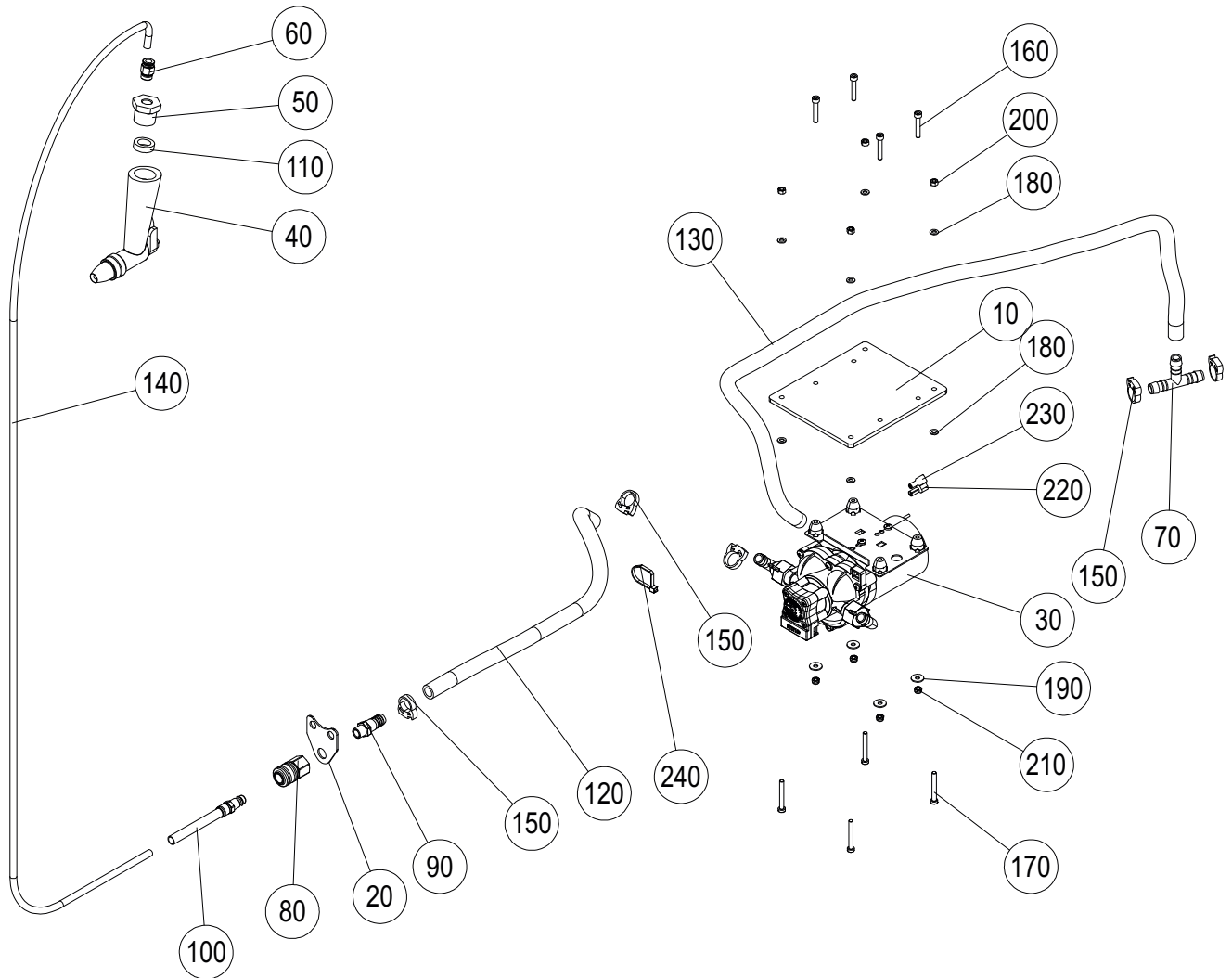
Chemiedosierung



Chemiedosierung

| Pos. | Art.Nr. | Stück | Bezeichnung | Description | Designation | Descrizione |
|------|----------|-------|----------------------------|-------------------------|-----------------------|--------------------------|
| 30 | 70108300 | 1 | Aufkleber Ch.dosierung | chemical dosing sticker | Autocollant de dosage | Adesivo "dosaggio" |
| 40 | 21044000 | 1 | Wippschalter rund | Wippschalter | switch | Interrupteur |
| 50 | 20369100 | 1 | Drucktaster | push button | Bouton-poussoir | pulsante |
| 60 | 20616000 | 1 | Schutzkappe | cap | Capuchon | cappuccio |
| 70 | 21168730 | 1 | Potentiometer mit Kabel | potentiometer | Potentiomètre | potenziometro |
| 80 | 21341900 | 1 | Rastscheibe | locking disc | disque de blocage | disco di bloccaggio |
| 90 | 20054500 | 1 | Scheibe 10,5 VA | washer | Rondelle | rondella |
| 100 | 21342000 | 1 | Rastfeder | locking spring | ressort de blocage | molla di bloccaggio |
| 110 | 21168830 | 1 | Potentiometerknopf | potentiometer button | Bouton potentiomètre | Bouton de potentiomètre |
| 120 | 20986900 | 1 | Kanister 10L | canister | Bidon | bidone |
| 130 | 20986901 | 1 | Verschluss für Kanister | cap | Bouchon | tappo |
| 140 | 20405300 | 1 | FW-Filter | filter | filtre | filtro |
| 150 | 20161300 | 4 | Kabelbinder TY 242 M | cable strip | Attache rapide | strip cavo |
| 160 | 20970600 | 1 | Chemiepumpe C0059-1 mit | pump for chemistry | Pompe pour la chimie | pompa per la chimica |
| 170 | 20970700 | 1 | Durchlaufmesser | flow indicator | débitmètre | flussometro |
| 180 | 20970800 | 1 | Rückschlagventil Chemie | retention valve | valve de retenue | valvola antiritorno |
| 190 | 21046400 | 1 | Knickschutztülle D9 | grommet | Buchon pour cable | passacavo |
| 200 | 21047301 | 1 | T-Stück 12 G1/8 | hose nozzle | Tubulure fileté | beccocio tubo flessib. |
| 210 | 50986300 | 0,7 | PVC-Schlauch transp. 5x1,5 | hose | Tuyau | tubo flessibile |
| 220 | 50986300 | 1,67 | PVC-Schlauch transp. 5x1,5 | hose | Tuyau | tubo flessibile |
| 230 | 20596500 | 4 | Schlauchklemme D17-18,5 | hose clamp | Collier | fascetta tubo flessib. |
| 240 | 20165400 | 2 | Sicherungsscheibe SMZ 3 vz | lock washer | Rondelle de sécurit. | anello d'arresto |
| 250 | 20009800 | 2 | Linsenschraube M3x12 | lens screw | Vis à tête bombée | vite a testa lenticolare |
| 260 | 20011500 | 2 | 6-Kantmutter M 3 vz | hex.nut | écrou hexagonal | dado esagonale |
| 270 | 21041401 | 1 | Kabel Pumpe-Durchlaufm. | signal cable | câble de signaux | Cavo di segnale |
| 280 | 21752800 | 1 | Adapterplatte Chemiepumpe | adapter plate | plaque | piastra |
| 290 | 20151900 | 3 | Zylinderschraube M6x12 VA | screw | Vis | vite |
| 300 | 20000700 | 3 | Scheibe 6,4 VA | washer | Rondelle | rondella |

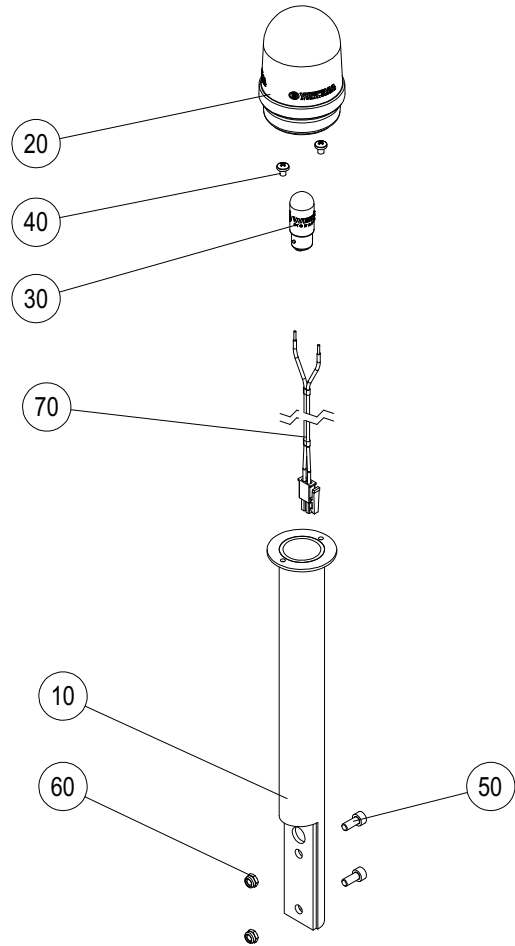
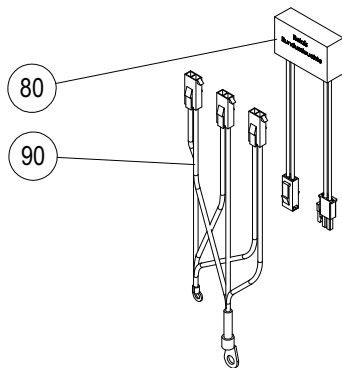
Sprühpistole



Sprühpistole

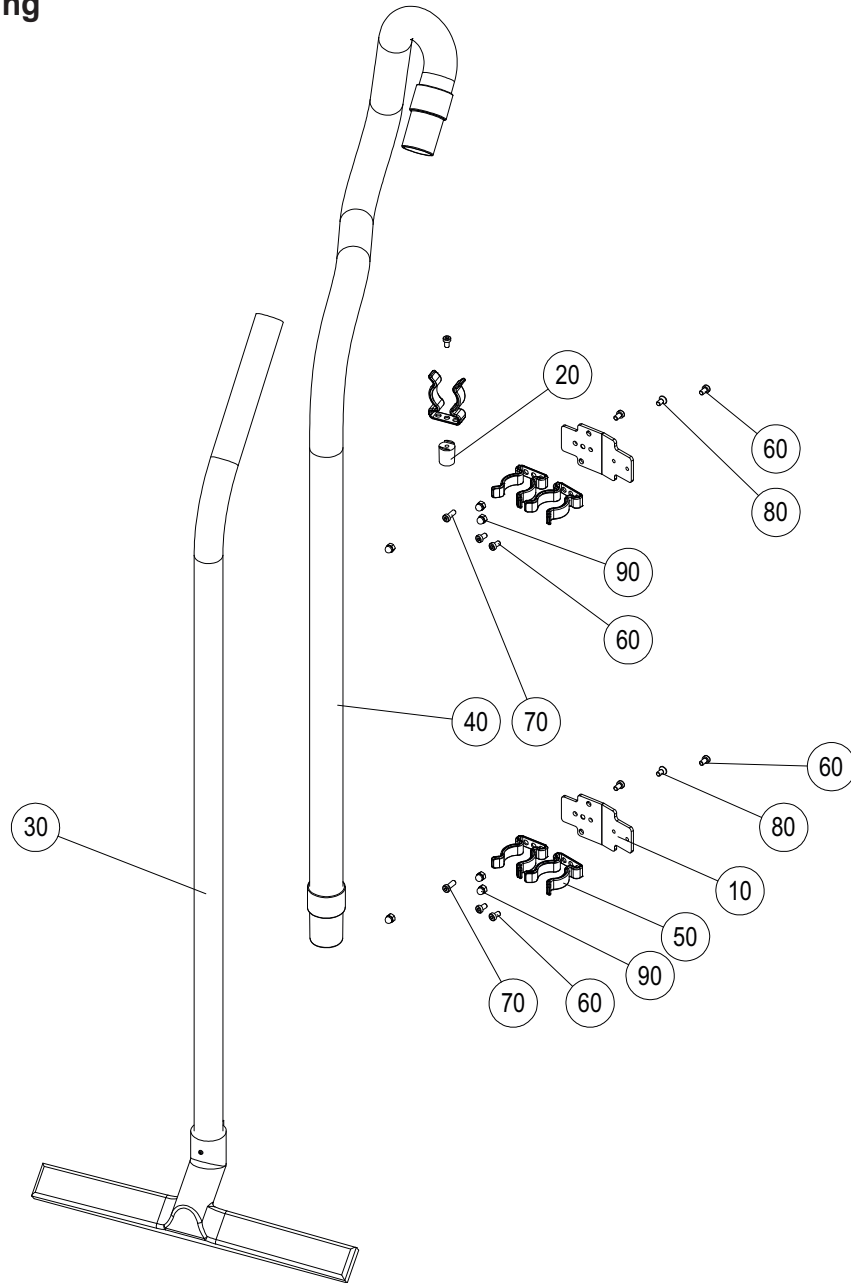
| Pos. | Art.Nr. | Stück | Bezeichnung | Description | Designation | Descrizione |
|------|----------|-------|----------------------------|-----------------|-----------------------|-------------------------|
| 10 | 21718300 | 1 | Halteblech Pumpe | pump plate | panneau pompe | pannello pompa |
| 20 | 21718100 | 1 | Halteblech | plate | panneau | pannello |
| 30 | 20805200 | 1 | Pumpe SHURflo Highflo 24V | pump | pompe | pompa |
| 40 | 21629900 | 1 | Pistolenspritzdüse | spray nozzle | Buse de pulverisation | ugello atomizzatore |
| 50 | 21560500 | 1 | Reduzierstück 3/4 1/4 | reducer | Réducteur | reducer |
| 60 | 20779600 | 1 | Steckverschraub. aussen Ø8 | Push-in fitting | Raccord enfichable | raccordo a innesto |
| 70 | 31047300 | 1 | T-Stück 12 | hose nozzle | Embout de tuyau | beccucio tubo flessib. |
| 80 | 20097300 | 1 | Schnellverschlusskupplung | quick coupling | Accouplement rapide | accoppiamento rapido |
| 90 | 20818800 | 1 | Schlauchtülle Ms 1/4" D12 | hose nozzle | Embout de tuyau | beccucio tubo flessib. |
| 100 | 21630100 | 1 | Nippel m.Feder NW7,2 | hose nipple | Mamelon de tuyau | Capezzolo |
| 110 | 21505900 | 1 | Gummidichtung 16x24,5x3 | seal | Joint | guarnizione |
| 120 | 50680800 | 1,11 | Schlauch 12,5x3 | hose | Tuyau | tubo flessibile |
| 130 | 50680800 | 0,42 | Schlauch 12,5x3 | hose | Tuyau | tubo flessibile |
| 140 | 51295000 | 1,55 | PVC-Schlauch schwarz 8x5,5 | hose | Tuyau | tubo flessibile |
| 150 | 20596500 | 5 | Schlauchklemme D17-18,5 | hose clamp | Collier | fascetta tubo flessib. |
| 160 | 20224600 | 4 | Zylinderschraube M5x30 VA | screw | Vis cylindrique | vite a testa cilindrica |
| 170 | 20037000 | 4 | Zylinderschraube M5x40 VA | screw | Vis cylindrique | vite a testa cilindrica |
| 180 | 20009600 | 8 | Scheibe 5,3 vz | washer | Rondelle | rondella |
| 190 | 20183000 | 4 | Scheibe 5,3 VA | washer | Rondelle | rondella |
| 200 | 20574300 | 4 | 6-Kantmutter M5 vzd | hex.nut | Ecrou | dado essag. |
| 210 | 20280600 | 4 | 6-Kantmutter M 5 stop VA | hex.nut | Ecrou | dado essag. |
| 220 | 20555900 | 1 | Flachstecker 6,3 | flat plug | fiche plate | spina piatta |
| 230 | 20556000 | 1 | Flachsteckhülse 6,3x0,8 | flat receptacle | réceptacle plat | ricettacolo piatto |
| 240 | 20161300 | 1 | Kabelbinder TY 242 M | cable strip | attache rapide | strip cavo |

Security-Kit



| Pos. | Art.Nr. | Stück | Bezeichnung | Description | Designation | Descrizione |
|------|----------|-------|------------------------|--------------------|-----------------------|--------------------------|
| 10 | 21691600 | 1 | Blinklichthalter | light holder | support de feu | porta lampeggiante |
| 20 | 20673000 | 1 | Rundumleuchte | flash light | lumière du flash | flash di luce |
| 30 | 20672900 | 1 | Glühlampe BA15d 24V/7W | incandescent lamp | Lampe à incandescence | lampada ad incandescenza |
| 40 | 20001500 | 2 | Linsenschraube M4x5 | lens screw | Vis à tête bombée | vite testa lenticolare |
| 50 | 20149200 | 2 | Zylinderschraube M5x12 | screw | Vis | vite |
| 60 | 20280600 | 2 | 6-Kantmutter M 5 stop | hex.nut | Ecrou | dado essag. |
| 70 | 21368601 | 1 | Kabel Security kit | cable security kit | Câble kit sécurité | Cavo kit di sicurezza |
| 80 | 21465600 | 1 | Relais Rundumleuchte | relay | Relais | relé |
| 90 | 21463500 | 1 | Anschlussstecker | connector cable | câble de connexion | cavo di collegamento |

Handabsaugung



| Pos. | Art.Nr. | Stück | Bezeichnung | Description | Designation | Descrizione |
|------|----------|-------|----------------------------|------------------------|-----------------------|--------------------------------|
| 10 | 21694200 | 2 | Halteblech | retaining plate | plaque de retenue | piastra |
| 20 | 21718700 | 1 | Befestigungsbolzen | mounting bolts | boulons de fixation | bulloni di fissaggio |
| 30 | 20179930 | 1 | Saugrohr kpl. | suction pipe | Tube d'aspiration | Tubo di aspirazione |
| 40 | 20068731 | 1 | Saugschlauch NW38x2,5m BG | suction hose | Flexible d'aspiration | tubo flessibile di aspirazione |
| 50 | 20218381 | 5 | Klemmfeder kpl | clamping ring | Ressort de serrage | portautensile |
| 60 | 20193000 | 9 | Zylinderschraube M6x10 vz | cylindrical-head screw | Vis cylindrique | vite a testa cilindrica |
| 70 | 20279200 | 2 | Zylinderschraube M 6x16 VA | cylindrical-head screw | Vis cylindrique | vite a testa cilindrica |
| 80 | 20636900 | 2 | Senkschraube M6x12 VA | countersunk screw | Vis à tête noyée | vite a testa svasata |
| 90 | 20149300 | 6 | Hutmutter M6 vz | cap nut | Ecrou | dado a cappello |

Änderungen im Zuge technischer Verbesserungen sind vorbehalten !
We reserve the right to effect modifications within the framework of technical progress !
Sous réserve de modification dans le cadre des développements techniques !
Essendo la nostra un'impresa a carattere innovativo, ci riserviamo la possibilità di apportare modifiche tecniche !

G. Staehle GmbH u. Co. KG
columbus Reinigungsmaschinen
Mercedesstr. 15
D - 70372 Stuttgart
Telefon +49(0)711 / 9544-950

info@columbus-clean.com
www.columbus-clean.com

71015700

columbus